

Funded
by the European Union
and the Council of Europe



EUROPEAN UNION



COUNCIL
OF EUROPE CONSEIL
DE L'EUROPE

Implemented
by the Council of Europe

**OFICIUL BIOSECURITATE
al Ministerul Mediului**

MD 2005 mun. Chişinău, str. Cosmonauţilor 9
tel/fax 22 68 74



**BIOSAFTY OFFICE
of the Ministry of
Environment**

MD 2005 Chişinău, 9 Cosmonauţilor str.
tel/fax 22-68-74

Joint Council of Europe/European Union Programme Emerald Network of Nature Protection Sites, Phase II

Activity Report for 2013

**By Dr. Angela Lozan, Emerald team leader
Chisinau, Republic of Moldova, 31 January 2014**

1. General outcomes for 2013:

The Moldovan Emerald Network project had several specific tasks for 2013, namely the following:

- Final Emerald sites database completed and delivered to the Council of Europe through the EIONET CDR, including corrections of data and :
 - Finalisation of the distribution per biogeographical region and populations in each country of all species and habitats;
 - Validation of distribution GIS maps of species and habitats already delivered through the 1st Joint Programme (2009 -2011) and creation of additional maps
 - Finalisation of sites database for all the sites with all data filled in, as defined in the Emerald Network Standard Data Form;
 - Finalisation of digital boundaries for all sites listed in GIS

The activities of the Emerald project implemented between April 2013 and January 2014 were focused on the following:

- Organisation of a National Emerald Workshops – 14-16 May 2013
- Review of Moldovan Legislation on Environment, Local public administration to identify the sufficiency of legal provisions for management plans for protected areas, under the local public authority jurisdiction;
- Finalization of data Reference Table on species and habitats of Resolutions No. 4 (1996) and No. 6 (1998) of the Bern Convention and Annex I of the Habitats Directive;
- Finalization of elaboration of Distribution maps of selected species and habitats in GIS;
- Finalization of Sites database for the sites listed with all ecological data filled according the review table;
- Review and finalization of Digital boundaries for all sites in GIS;
- Modification of codification of Habitats Biogeo Table according to EUNIS classification;
- Organisation of field trips to the national Reserve Prutul de Jos, Balti Steppes, Padurea Hirbovets et others.
- Introduction of a new Emerald site – Padurea Harbovets – elaboration of GIS map, characterization of the site;
- Comments to the Manual on habitats
- The reviewed and improved National Emerald Data base and GIS are available at EUNIS biodiversity database www.eionet.europa.eu;
- Dissemination of information and visibility of the Emerald Network work:
 - “Caravana BIO” – bus trip to north, central and south regions of the country, meetings with school children, students, teachers, local public administration, farmers etc.
 - Seminar-round table with students of the State University of Moldova – 23 September 2013. An voluntary involvement of students of the Biological Faculty was discussed to provide further monitoring of Emerald species of flora and fauna, as well as and the status of Emerald sites;
 - Radio conference for Moldova Radio 1;
 - Submitted an article “Emerald Network in Moldova” to be published in the scientific magazine “Mediu Ambient”, 2014
 - Publication of information on website bsapm.moldnet.md
- Emerald project staff made presentations at the following meetings:
 - Meetings of the Group of Experts on Protected Areas CoE, 2013
 - Presentation at Steering Committee Meetings (Strasbourg, France), 2013
 - Kick-off meeting on Emerald Network in Kyev, Ukraine, March, 2013

The materials elaborated during 2013 were uploaded into the CDR EIONET as requested.

2. Methodologies applied for collecting and finalization of scientific data during 2013

- **Evaluation of candidate Emerald sites on species-by-species and habitat-by-habitat basis**
 - Checked list of species, its distribution on GIS maps and areas not included in Emerald
 - Identified areas where Emerald species are presented, but not involved in EN
 - Field visits to the area (Hirbovets Forest)
 - Consulted available scientific publications and databases on species and habitats
- **What has been done to overcome these gaps?**
 - Working meeting with specialists and experts
 - Establishing criteria on suitability of identifies additional sites
 - Public consultation with national authorities, researchers, NGOs
- **How newly identified areas suitable to join the Emerald Network?**
 - Presence of Emerald habitats - G1A1 Oak-hornbeam forest
 - Presence of 10 sp. of animals and 2 sp. of plants of Emerald
 - Is included in the National Ecological Network
 - “Park Hirbovets” of special value as natural area and cultural site

- Has the status of landscape reserve by the Law on Protected areas Fund
- Is the most important massive of forest along the Dnister River with the specific vegetation

The methods also included the meetings of small working groups with relevant experts and specialists to discuss the proposed Lists of species, habitats and sites, as well as population, biogeographical and ecological information on the selected species and habitats. The methodology involved the meetings and consultations with local ecological experts, natural reserves' personnel, forest officers, local authorities (Mayor's offices personnel, environmental protection directorates, regional ecological inspections) and representatives of local communities (schoolteachers, youth) and NGOs (Biotica, Eco-Tiras, Gutta) as well as some local NGOs on status of protected areas, public involvement in nature protection.

How the team has estimated the gaps and insufficiency of proposed sites?

- Consulted list of existent protected areas (Law on Protected areas) (ME)
- Consulted the Forest management planning maps (FMP) ("Moldsilva")
- Consulted scientific papers and scientific reports (USM, Academy of Sciences)
- Consulted database of National Ecological network, Wetlands (Biotica NGO), Steppes ecosystems, Protected areas etc.
- Field trips of Emerald team to Hirbovets forest, Balti steppe, Prutul de Jos sites etc.

Encountered difficulties for Reference databases

- **Encountered difficulties to identify possible presence of certain species or habitats?**
 - Insufficient published data on species and its population and biogeographical distribution, boundaries, mapping
 - Limited resources to organize field trips and monitoring of status of some Emerald species and habitats
 - No classification of natural habitats done yet
 - Umbra krameri – excluded from the list – no updated information of its presence in Moldova
- **Within biogeographical regions?**
 - Continental and steppes biogeographical regions in Moldova – no difficulties were encountered.

3. National Emerald Network Workshop, 14-16 May 2013

The Emerald database and GIS have been discussed largely during National Emerald workshop, providing consensus and agreement with different stakeholders, academia, educational, central and local authorities, NGOs, representatives of natural reserves administration, ecological inspection, forestry management etc. See details in the Annex 1 – National Emerald Network Workshop, Agenda, Narrative report and conclusions and List of Participants.



4. Site visits and field trips to the potential Emerald sites during April 2013, August 2013 and December 2013

During the National Emerald workshop 14-15 April 2013, a field visit to Natural Reserve Prutul de Jos, Cahul and Giurgiulesti - the extreme South border point of the country have been organized. The Emerald team staff and Marc Roekaerts participated in the field trip. See description of field visit in the workshop narrative report.



Field trips to the following Emerald sites were organized in the period of August – October 2013:

1. Soroca- Orhei_National Parc Orhei
2. Orhei- Balti- Padurea Domneasca
3. Straseni, Reservatia Codru – Calaras
4. Padurea Hirbovets- Bender- Causeni-Stefan Voda

The scientific team of consultants collected scientific information of species, habitats, and also identifying the new sites to be proposed for completion of the Emerald list of sites.

Another round of field trips was organized with the scope of visualization of the Emerald Network. The “Caravana BIO” minibus trip event organized to meeting of the Emerald team and researchers with local people, students, and school children, local public administration, NGOs etc. in the North, Central and South part of the country. (June - September 2013). At the same time, field visit to check scientific information was provided by the emerald team consultants. In the following Emerald sites:

1. Leova-Cantemir- Cahul_Rezervatia Prutul de jos-Chisinau
2. Straseni-Ungheni- Chisinau
3. Hirbovets-Bender-Vadului Voda-Chisinau
4. Rezervatia Codru- Nisporeni- Ulm_ Capriana-Chisinau

As a result, the presence and distribution of protected plants and animal species were checked, their number and trends discussed with local Ecological inspectorates, the protected areas and sites having no protective status yet, but representing an interest from the biodiversity point of view, were examined. The boundaries of these areas have been checked and studied. In these trips participated the team of local consultants: I.Cotofana, Prof.Gh.Postolache, Prof.M.Lesanu, Dr.A.Loza, M.Vatamaniuc and Maria Nagornii.

Field trips made in possible to obtain and check the fresh information on presence and population of endangered species, to assess the overall state of protected area in Moldova, to inform and discuss with local authorities the tasks of the Emerald project and receive their comments and proposals, to estimate the presence and state of habitats in forest zones, steppe zones, areas close to the natural water bodies.

The materials received have been used to finalize the Emerald database, to verify the digital boundaries of areas on Emerald project during 2013.

A series of meetings with public administration, local personnel and local community people was held in September- October. The scope of these meetings was to inform the authorities responsible for nature protection and conservation in Moldova, and a broad circle of project stakeholders on the main outcomes and further development of the Emerald project, to get their feedback and comments regarding the selected sites for Emerald network and sizes of proposed areas, receive from them the updated information of the state and presence of plant and animal species, to learn about the novel trends in migration and economic activity interference in the life of natural protected zones and eventual measures of protection that should be additionally taken by the government.

5. Database on species and habitats, according to the Bern Convention lists

The revised and finalized database and GIS maps (total Five categories of information from Moldova Emerald Network) were uploaded and available at the EUNIS European information system (<http://eunis.eea.europa.eu/gis-tool.jsp>) and the EIONET European database (<http://cdr.eionet.europa.eu/>):

- **The new Emerald site “Padurea Hirbovets”** – Natural protected area was proposed to be included in the Moldovan Emerald Network.

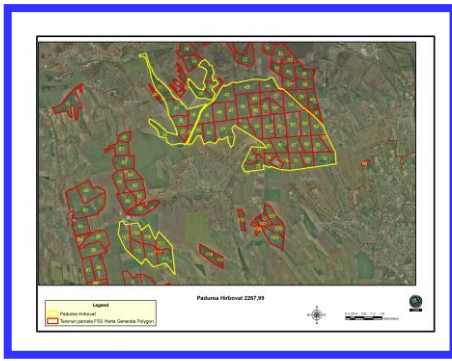
Situated in Eastern Moldova, Bender District, along Dnister river

Includes habitats:G1A1 Oak-hornbeam forest

Sp.fauna: Myotis dasycneme, Pleobates fuscus insubricus, Alcedo atthis, Caprimugus europaeus, Crex crex, Falco peregrinus, F.vespertinus, Pernis apivoris, B.bombina, Lucanus cervus

Sp. Flora: Crambe tataria, Pulsatila grandis

Approx. area: 2218 ha



6. Integration of Emerald and Ecological Networks in the national environmental policy

- Draft National Biodiversity Strategy and Action Plan for the Republic of Moldova for years 2013-2020. http://bsapm.moldnet.md/Romana/SNPACB_30.09.2013.pdf
- Target B: Reduce pressure on the biological diversity to ensure sustainable development:
- Establishment of Emerald Network as the component part of the Ecological Pan-European Network/ year 2019
- Draft Environmental Strategy of Moldova for years 2014-2024: <http://mediu.gov.md/index.php/transparenta-in-procesul-decizional/consultari-publice>
- Draft National Strategy on Wetlands http://www.biotica-moldova.org/library/WetlandStrategy_MD.pdf
- Draft RED BOOK – Third edition 2014

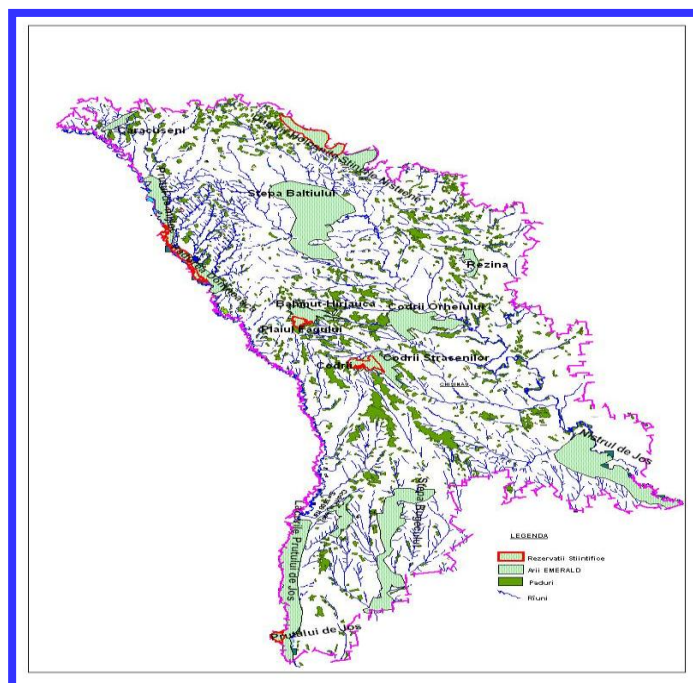
7. Monitoring and management of Emerald sites/species

- *Ministry of Environment/State Ecological Inspectorate* – flora-fauna monitoring and database (by Law on Environmental Protection, Law on Red book, Law on animal kingdom, Law on vegetation, Law on protected areas Fund)
- *State forestry service “Moldsilva”* ensure management of Scientific Reserves (by Law on protected areas Fund, Forestry code). Management plans and monitoring (Annals of nature)
- *Local public administration* ensures management of other types of protected areas (natural reserves, landscape reserves, monuments etc.) (by Law on Public Administration). No sufficient management planning
- *Academy of Sciences, State University of Moldova* – Biodiversity monitoring: plants and animal species, Red book species

8. Geo-Informational System (GIS) distribution maps and digital boundaries of selected species, habitats and sites

During the project period, 100% of species, habitats and sites identified for Emerald network, were GIS presented in GIS digital mapping format and uploaded to the CDR system. In total, GIS maps have been elaborated for 9 plant species, 74 animal species, 42 designated sites, 12 integrated sites, one generalized GIS map (Fig.1), and one map which combines the Ecological Network and National Ecological network (Fig.2).

Fig.1. GIS Map of Emerald sites in Moldova



9. Local scientific and technical consultancy for the Emerald Project

The consultants' selection was made on the base of their qualifications and each consultant was selected on the base of three CVs presented, by the Selection Commission composed of the Deputy Minister of Environment RM, Deputy Head of Biodiversity Division of the Ministry of Environment, Director of the Botanical Gardens research Institute of the academy of Sciences of Moldova and Emerald Project Manager.

List of local consultants and their contribution to the Emerald project in 2013:

1. Dr. Angela Lozan, Biosafety Office, Ministry of Environment. Emerald Project in Moldova; Team Leader on project coordination; consultant on animal species

Overall Project planning, executing and coordination, financial planning and reporting. Planning and monitoring of overall project activities. Organization of the National workshop on Emerald Network, other technical meetings. Coordination activity with relevant sectorial stakeholders. Organisation of consultants site visits for project sites, arranging the site meetings and examination. Organisation of awareness and visibility of the Emerald Network, large public information. Revising and finalization of the database of animal species, their population characteristic, biogeographical distribution, GIS boundaries. Reporting and presentations on project progress, challenges and forthcoming activity at the national and international meetings.

2. Mr. Ion Cotofana, Biology Specialist, Biodiversity Office, Ministry of Environment; Consultant on GIS and database of the Emerald network

Scientific and technical work to generalization of updated data and introducing into the national Emerald tables on species, habitats and sites. Analysis of data insufficiency according to the data revision table for Moldova. Proposals to completion and updating of the national database and tables. Comments to the Manual of habitats. Elaboration of new GIS maps for the additional Emerald sites and revision and improvement of Emerald GIS mapping. The technical information on species and habitats of plants, and animal species as well as habitats and sites is revised, completed and finalised. Biogeographical information of species and habitats is updated.

3. Dr.hab. Professor Gheorghe Postolache - Institute of Botany Academy of Sciences of Moldova Consultant on biogeography, habitats and plant species

Scientific and technical work to generalization of updated data and introducing into the national Emerald tables on plant species, habitats and sites. Analysis of data insufficiency according to the data revision table for Moldova. Proposals to completion and updating of the national database and tables. Scientific data for the GIS maps for the

additional Emerald sites Padurea Hirboveti. The scientific information on plant species and habitats as well as habitats and sites will be revised, completed and finalised. Biogeographical information of species and habitats will be updated according to the Emerald methodology.

4. Dr.Hab., Professor Leonid Volosciuc – researcher at Institute of Genetics and decological agriculture, Academy of Sciences of Moldova

Consultant on scientific work and management of protected areas

Scientific work and analysis of the available data and information related to the status of habitats and Emerald sites in Moldova. A compilation of scientific literature, articles and published books in order to collect the updated information of the state and trends of habitats and anthropogenic factors. A compilation of the existent legislative documents that provides with rules and mechanisms for management of protected areas of all categories according to IUCN classification.

5. Dr. Mihai Lesanu, University lecturer, State Moldovan University, Faculty of Biology

Consultant on communication and education on the Emerald network

An analysis of educational programs and curricula development in the field of Biology and ecology within the university education in the country has been done. Information note with recommendations of how the knowledge on Emerald network can be integrated in the university curricula in specialities of botanic, zoology, geography, geology, landscape techniques, pedology etc developed. Consultant organized a workshop with university students/ young people, professorial staff to discuss perspectives of how to integrate Emerald network in the university educational process, and how students can contribute to provide monitoring of species and habitats included in the Emerald network. A special methodological guideline will be prepared to facilitate voluntary work of young people, school children, local people and students in providing monitoring of Emerald network. Contribution to the visualization of the Emerald Network through the young people, students, local people. He/she will organize visualization activity, stakeholder communication, mediatization of the Emerald Network

6. Ms. Maria Nagornii – specialists, Division of Environmental policy and European Integration, Ministry of Environment

Consultant on international conventions and policy development of protected areas

An overview of existent international conventions in the field of conservation of biological diversity. He/she will draft a paper for synergy measures to integrate the provisions of international conventions into national policy documents. Proposals to integrate Emerald network into the NBSAP, National Strategy for Environmental protection, National Program on protected areas etc. Visualization activity, stakeholder communication, mediatization of the Emerald Network.

7. Mr. Sergiu Chirica, consultant, Section of justice, Parliament of the RM.

Consultant on policy and sectorial legislation related to management of protected areas

An overview of sectorial policies and regulatory framework with relation to the management of protected areas at national and local levels. An analysis of the state and sufficiency of legislation in the field of forestry, environmental protection, local administration, rural development, agriculture, fishery, plant protection, as well as research and development. Recommendations of how to meet the country needs and constraints in order to ensure sustainable conservation and use of biological resources, to ensure conservation measures at national and local levels via development of management plans, completion of Red book, information education of population etc.

8. Ms. Marcela Vatamaniuc, free land specialists, Biosafety Office

Consultant on steppes sites and protected areas

Analysis of the state of boundaries of steppes ecosystems in Moldova, Balti steppes and Bugeac steppes. The state of flora, analysis of anthropic factors, delimitation of steppes borders and agricultural activities, pasture of domestic animals. She prepares recommendations to update the Emerald database, geographical data, GIS boundaries in relation to steppes ecosystems.

9. Mr. Nikita Birkin, free land media specialist

Consultant on visualization and public information

Provide information and mediatization of Emerald network via mass media. Preparation of media information to disseminate it at the TV program within the "NATURA" emission. Provide interviews with scientists, national Emerald team, national authorities, academy of sciences to make publicity and inform people of the scope and expectations of the Emerald network in the regional and national contexts.

10. Mr. Liviu Andronic, Biosafety Office

Consultant on database (technical support), visualization of the Emerald network

Provide assistance and technical support in finalization of information on species, and habitats, GIS mapping, updating of national database. Collection and generalization of information and data submitted by consultants, as well as will arrange the data in accordance with the technical requirements and methodology proposed by the international scientific consultant of the Emerald project. Provide technical assistance to the team leader in the day-to-day project administrative and financial planning and reporting activity. Organize visualization activity, stakeholder communication, mediatization of the Emerald Network. Organisation of the national workshop as well as other meetings, round tables, technical workshops and trainings of the consultants. Provide assistance in accounting and preparation of final financial reporting of the Project

10. Visibility of the Emerald Network in Moldova

- National Workshop on Emerald Network
- Brochure Emerald Network – disseminated
- “Caravana BIO” to Balti, Cahul, Orhei, Calaras districts
- USM Emerald meeting – students, curricula
- Seminar-round table on Emerald Network at the State University of Moldova
- Website BSAP Moldova -Min.Environment

<http://bsapm.moldnet.md/Noutati/Emerald%20Moldova.htm>

Mediatization of Emerald Project and its main outcomes have been provided via the radio broadcast (, meetings with local communities and administrations, meeting at the Ministry of Environment , meeting at the Institute of Zoology ASM , meeting at the Institute of Botany ASM , Seminar – Round Table in the State University of Moldova etc.

Seminar – Round Table in the State University of Moldova – 23 September 2013, Chisinau, Moldova. A total number of 55 participants were involved in the discussion of how the students of the university may contribute to organize voluntary monitoring of the Emerald Network. An overview of the curricula, special courses and themes of license and master degree work were provided during the meeting. A special methodology of which kind of information on Emerald species of flora and fauna, habitats and emerald sites should be collected, and how. How the data are to follow to submit to the Ministry of Environment to advise the monitoring and reporting under the Bern Convention.



A series of photos on Moldova’s Emerald species, habitats and areas have been done to be used in the mediatization campaign.

The Brochure “Emerald Network in the Republic of Moldova” Chisinau, 2012 has been disseminated during the workshops, meetings, Caravana BIO event to large public. The Brochure Emerald Network in Moldova has been published on website [www. bsapm.moldnet.md](http://bsapm.moldnet.md). <http://bsapm.moldnet.md/Noutati/Emerald%20Moldova.htm>



11. Presentations, publications, workshops

A country presentation at the Kick-off meeting for the Emerald Network made in Kyev, Ukrain, March, 2013.

At the Meeting of Expert Group on Protected Areas in Strasbourg, September 2013, the presentation on Emerald network in Moldova has been done by Dr.Angela Lozan. **Under the BL 1.1 and 2.1 the trip to Strasbourg was supported for A.Loazan under the project buget.**

In October 2013, at the Meeting of Steering Committee of Emerald Project in Strasbourg, the presentation on Moldova Emerald Project outcomes and perspectives was made by A.Loazan and Mr.I.Cotofana.

Visualizations Emerald network materials are prepared to be printed – A Thematic Report “Emerald Network in Moldova”, and other illustrative materials (files).

A scientific paper is prepared and submitted to the “Mediu Ambient” scientific magazine to be published in 2014.

How the implementation of EN is envisaged by national authorities?

- EN is considered as a priority and integrated in the draft Strategies and action plans
- National authorities participates in EN workshops, meetings and mediatization
- **Issues encountered?**
 - NA - uncertainty related future monitoring and reporting to Bern Convention on the status of emerald sites and species
 - Limited capacities to ensure monitoring for species and habitats
 - Limited human, technical and financial resources to ensure reporting for large number of sites/species to Bern Convention
 - Not clear how to ensure management/monitoring/reporting over the adjacent areas (agricultural lands and settlements) as part of Emerald sites
- **Possible solutions found?**
 - Involving decentralization units of local administration (in future)
 - Assessment of general anthropic factors/degradation of habitats/sp.indicators
 - Core zones monitoring data by Scientific reserve team
 - Students involving to ensure data collection and monitoring /SUM discussed
 - School children/teachers involvement in public monitoring/website
 - Collaboration with NGOs, local NGOs

12. Collaboration with other program/projects/NGOs

- GEF/UNDP project “Improving coverage and management effectiveness of the Protected Area System in Moldova”
- GEF/UNEP National Biodiversity Planning to Support the Implementation of the CBD 2011-2020 Strategic Plan in Republic of Moldova
- TACIS project “Sustainable and Integrated Development of the land use in the steppe ecosystems in Eurasia”
- NGO “Biotica” – database on Ecological Network and Wetlands

- NGO “Ecospectru” – WWF project “Climate Proofing Danube Delta through integrated land and water management”
- ENPI FLEG Improving Forest Law Enforcement and Governance in ENPI countries and Russia

**National Workshop for the implementation of the
Council of Europe / European Union Joint Programme
Emerald Network, Phase II**

14-16 May 2013, Ministry of Environment of Moldova

AGENDA

14 May 2013

08h00 - 19h00	Field trip to the potential Emerald Site “Prutul de Jos” with participation of the representatives from the Ministry of Environment, State Ecological Inspectorate, Administration of the Natural reserve “Prutul de Jos” etc. (selected group)
----------------------	--

15 May 2013 (Conference hall of the Ministry of Environment, 9 Cosmonautilor Str., (7 floor), Chisinau, MD2005, Republic of Moldova)

9h30 - 9h50	<p>Opening and welcoming remarks Ministry of Environment of Moldova (tbc) Representative of the Delegation of the European Commission to Moldova (tbc)</p> <p>Welcome words by the Council of Europe <i>Mr. Marc Roekaerts</i>, International expert,</p>
9h50 - 11h10	<p>Council of Europe recent decisions adopted by the Bern Convention Standing Committee on the Emerald network setting-up <i>Ms. Veronica Josu</i>, Division Natural Resources and Biodiversity, Ministry of Environment</p>
11h10 - 10h30	<p>Overview on the Emerald Network Programme Phase I. Regional involvement and general information. Future development of the Emerald Network in the phase II. <i>Mr. Marc Roekaerts</i>, International expert, Council of Europe</p>
10h30 - 11h00	<p>Main outcomes of the Emerald Network Project phase II and the on-going activities on regulating the Emerald sites and public information <i>Ms. Angela Lozan</i>, Emerald team leader, Biosafety Office</p>
11h00 - 11h20	Coffee break
11h20 - 11h40	<p>Presentations by National team members: ➤ <i>Mr. Cotofana</i> Overview on Proposed Emerald Sites for Moldova. Further development of the sites network. GIS Site boundaries. Reference Database. Status of the 2011 data base. GIS distribution data: - Species - Habitats ➤ <i>Mr. Gheorghe Postolache</i> Proposed list of species to be added to the Bern Convention. Status of protection of proposed species.</p>
11h40 - 12h00	<p>Proposed Emerald Sites: - QA/QC report - Further development of the sites network - GIS Site boundaries <i>Mr. Marc Roekaerts</i>, International expert, Council of Europe</p>
12h00 - 12h20	<p>Reference Database - Status of the 2011 data base - Questions and further development <i>Mr. Marc Roekaerts</i>, International expert, Council of Europe</p>

12h20 - 12h40	GIS distribution data: - Species - Habitats <i>Mr. Marc Roekaerts, International expert, Council of Europe</i>
12h40 - 13h00	Questions and answers session
13h00 - 13h30	Lunch break
13h30 - 13h40	Interpretation manual for new version of Resolution 4. Questions and need for comments <i>Mr. Marc Roekaerts, International expert, Council of Europe</i>
13h40 -14h00	Species and habitats to be added to the Bern Convention: discussion on the way forward according to the Emerald Calendar 2020 <i>Mr. Marc Roekaerts, International expert, Council of Europe</i>
14h00 -14h30	Questions and answers session
14h30 - 15h00	Discussions and conclusion of the Seminar
15h00 - 15h30	Coffee served

16 May 2013 (Office Biosafety, Mitropolit Dosoftei str. 156A, of 305)

09h00 - 14h00	Practical work with national experts and the staff of the Ministry of Environment on planning activities on Emerald Network in Moldova, revision and completion of information and database, extending of Emerald network, next steps, etc.
----------------------	---

Tuesday, 14 May 2013

In conformity with the proposed Agenda of the meeting, on Tuesday, 14 May 2013, a group of experts, namely Mr. Marc Roekaerts, international consultant, Ms. Angela Lozan, national Emerald team-leader and Mr. Ion Cotofana, local consultant participated at the field trip visit in the potential Emerald Site "Prutul de Jos", Vulcanesti district (raion). There were discussion and exchange of information held with Mr. V.Girnet, the Head of the Ecological Inspectorate Agency Cahul, Mr. Ion Delean, Director of the Natural reserve "Prutul de Jos", scientific personnel of the section of research of the administration of the National Scientific Reserve. A meeting was held in the Administrative Office of the Scientific Reserve in the village Slobozia Mare, Vulcanesti raion.

A field visit organized on a boat along the lake Belevu, the nucleus zona of the scientific reserve. Protected Area Prutul de Jos is the synonym of the virginity of nature. It is located in the bottom of the Prut River. In its composition enter the lake Belevu, a network of ponds which, together, form a unique ecosystem of national and international importance; extends from Cahul to Giurgiulesti. Protected Area Prutul de Jos was created to protect flora and fauna of the lake Belevu and of the floating meadows from nearby. Reservation's surface is 1691 hectares, about 1/3 of the reservation surface is occupied by the Lake Belevu waters; rest of the territory is represented by the marsh vegetation and the floating meadows. The lake Belevu is a relict of Danube River and has over 5-6 thousand of years. The length of the lake is 5 km, width - 2 km, average depth – 0.5 to 1.5 m, maximum depth is 2.5 m. Water levels in Lake Belevu largely depends on water level of Danube and Prut Rivers. The fauna is specific to aquatic ecosystems that serve as nesting place for birds, during seasonal migrations this aquatic ecosystem serves as place for rest and feed for migratory birds. There were highlighted more than 20 species of fish. Lake Belevu serves as preferred medium for species of fish living in the lake, as well for migratory species of fish from the Danube to spawn. There are such species as pike perch, carp, and bream. So, the amateur fishermen for sure will find the revelation here among the finest fish species.

Experts visited also Giurgiulesti village, the extremal south geographical point and the bank of Danube river. The Giurgiulesti port should be considered as a source of potential anthropic impact over natural ecosystems and the Emerald sites.

The geographical boarder were observed along the Prut river between Sarata Galbena village and the Belevu lake. The flood lands represented by wetlands are partially involved in agricultural activities. The agriculture is not considered a very profitable and efficient activity in the adjacent to Prut river territories due to the high level of soil salinization.

Wednesday, 15 May 2013

(Conference hall of the Ministry of Environment, 9 Cosmonautilor Str., (7 floor), Chisinau, MD2005, Republic of Moldova).

Participants: a number of 30 participants registered to the workshop and represented the Ministry of Environment, Ministry of Agriculture and Food Industry, State Agency Moldosilva, FLEX ENPI project, Research Institute of Ecology, Research Institute of Botany, Research Institute of Zoology of the Academy of Sciences, State University of Moldova, Biosafety Office, Biodiversity Office, EU project on steppes restoration, NGO Biotica, Mass media, National Reserves Codru, Natural Reserve Prutul de Jos, Natural Reserve Padurea Domneasca, Natural Reserve Plaiul Fagului, State Ecological Inspection, Ecological agencies of Orhei, Comrat, Cahul, Straseni, Research Institute of Horticulture, Research Institute of Forestry, Emerald experts, students.

Opening and welcoming remarks were made by Mr. Lazar Chirica, Deputy Minister of Environment of Moldova. He focused to the importance of biodiversity conservation in Moldova, in accordance to the CBD and the Bern Convention. He mentioned that a Caravana of Biodiversity will be organized in May to celebrate the Global Biodiversity day and the 45 years anniversary of the central environmental authority of Moldova. He pointed out the considerable results achieved during the previous phase of the Emerald project and welcomed the continuation of the work on establishment of Emerald network. He also remarked the important and fruitful collaboration with the Council of Europe and the European Commission in the field of environmental protection and biodiversity.

Welcome words by the Council of Europe done by Mr. Marc Roekaerts, International expert. He welcomed participants of the seminar on behalf of the Council of Europe and the European Commission. He made a summary of the work during the previous stage of the regional project on Emerald network as the extension of Natura-2000 Network and in accordance with the Bern Convention program of work. He also made a general presentation of objectives and tasks for the next stage of Emerald programme.

Ms. Veronica Josu, Deputy head of the Division Natural Resources and Biodiversity, Ministry of Environment made a presentation on the title: The Council of Europe recent decisions adopted by the Bern Convention Standing

Committee on the Emerald network setting-up. She informed the participants of the latest decisions of the Standing committee of the Bern Convention, December 2012, as well as the main activities of the Ministry of Environment to be in compliance with the new developments of the convention.

Mr. Marc Roekaerts, International expert, Council of Europe made an overview on the Emerald Network Programme Phase I. Regional involvement and general information. Future development of the Emerald Network in the phase II. He pointed off the main outcomes of the phase I of the project made by the involved countries and Moldova. The table of assessment of countries information was presented with focus on lack or incomplete information on population and ecological information, when appropriate.

Ms. Angela Lozan, Emerald team leader, Biosafety Office, presented information related to the main outcomes of the Emerald Network Project phase II and the on-going activities on regulating the Emerald sites and public information. She mentioned that during the first phase of the project the list of species and habitats in Moldova according to the Bern convention was revised and completed. The sites or natural areas selected to be proposed as the candidate sites to the Emerald network. The ecological, populational and biogeographical information collected and presented in databases. GIS mapping provided. The main objectives and tasks for the next phase of the project were outlined.

Presentations by National team members: *Mr. Ion Cotofana* presented an overview on Proposed Emerald Sites for Moldova. Further development of the sites network. GIS Site boundaries. Reference Database. Status of the 2011 data base. GIS distribution data on Species and Habitats

Mr. Gheorghe Postolache presented the information concerning the proposed list of species to be added to the Bern Convention. Status of protection of proposed species. Proposed Emerald Sites: Further development of the sites network, GIS Site boundaries.

Mr. Marc Roekaerts, International expert, Council of Europe, presented the synthesis of Reference Database, specifically referred to the status of the 2011 data base and questions and further development. A special attention was done to Moldovas data delivered regarding the populational, ecological and biogeographical information.

In his following presentation *Mr. Marc Roekaerts* made an assessment of Emerald GIS distribution data for species and habitats. He mentioned some questions to be clarified by Moldovan experts that referred to the boundary of habitats in the candidate Emerald sites.

During the Questions and answers session participants brought their comments and questions.

An overview on Interpretation manual for new version of Resolution 4 made by *Mr. Marc Roekaerts*. He explained the reporting approach for the countries of Eastern Europe to the Bern Convention, the new classification codes EUNIS, as well as biogeographic approach and habitats characterisation.

Mr. Marc Roekaerts also presented the agreed methodology on how species and habitats to be added to the Bern Convention. Discussion on the way forward according to the Emerald Calendar 2020. A detailed timetable and expected procedures from the Emerald countries to submit their proposals for additional species and habitats to be included in the Bern Convention were discussed. A series of Biogeographical conferences will be held to clarify the list of species and habitats proposed by countries in the region.

Questions and answers session

Discussions and conclusion of the Seminar

Thursday, 16 May 2013

(Office Biosafety, Mitropolit Dosoftei str. 156A, of 305)

A practical work with national experts and the staff of the Ministry of Environment on planning activities on Emerald Network in Moldova have been done related the revision and completion of information and database, extending of Emerald network, planning next steps. The task, quality of information, constrains and further developments as well as the deadlines were discussed. Participants: Mr. Marc Roekaerts, Angela Lozan, Ion Cotofana, Marcela Vatamaniuc.

Funded
by the European Union
and the Council of Europe



EUROPEAN UNION



COUNCIL
OF EUROPE
CONSEIL
DE L'EUROPE

Implemented
by the Council of Europe

MINISTRY OF ENVIRONMENT
Council of Europe / European Union Joint Programme Emerald Network, Phase II
First national workshop, 15 May 2013
List of Participants

Nr.	Name of expert	Position	Institution	Address; E-mail; tel.
1	Lazar Chirica	Deputy Minister	Ministry of Environment	chirica@mediu.gov.md Tel: 20 45 06
2	Dr. Marc Roekaerts	Scientific consultant	CoE, Emerald Network Programme	
3	Dr. Angela Lozan	Manager	Ministry of Environment, Biosafety Office	angelalozan@yahoo.com Tel/fax: 22 68 74
4	Ala Rotaru	Head of Division	Ministry of Environment, Natural Resources and Biodiversity Division	mcoca@mediu.gov.md Tel: 20 45 22
5	Lilia Iladi	Biodiversity division consultant	Ministry of Environment	204535
6	Veronica Josu	Deputy head Division	Ministry of Environment, Natural Resources and Biodiversity Division	Tel: 20 45 35
7	Vitalie Grimalschi	Sef sectie	Ministry of Environment, Natural Resources and Biodiversity Division	Tel: 20 45 37
8	Stratulat Ion	Sef sectie	State Ecological Inspectorate Inspection of Flora and Fauna Division	Tel. 20 45 10
9	Ion Gavdiuc	Head	Ecological Agency Balti	Tel: 231 33 390
10	Girnet Ion	Head	Ecological Agency Cahul	Tel: 299 22 950
11	Sova Ion		Ecological Agency Orhei	Tel: 28 10 03
12	Andrei Ibrisin	Head	Ecological Agency Comrat	Tel: 298 24 046
13	Iurie Senic	Head	Ministry of Agriculture, Division Ecological agriculture	221140
14	Dr. Gheorge Postolache	Researcher	Institute of Botanic, Academy of Sciences of Moldova	Tel: 63 66 53
15	Aliona Miron	Researcher	Institute of Botanic, Academy of Sciences of Moldova	Tel: 52 38 98; 55 61 45; 55 9136 Fax: 52 38 98

16	Victoria Covali	Researcher	Institute of Botanic, Academy of Sciences of Moldova	Tel: 52 38 98; 55 61 45; 55 91 36 Fax: 52 38 98
17	Ghenadie Titică	Doctorand	Institute of Botanic, Academy of Sciences of Moldova	Tel: 52 38 98; 55 61 45; 55 91 36 Fax: 52 38 98
18	Dr. Alexandru Teleuta	Director Institute of Botanic, Head of Biodiversity Office	Institute of Botanic, Academy of Sciences of Moldova	gradinabotanica1@moldnet.md Tel: 55 04 43
19	Dr.Hab. Pintea Maria	Researcher coordonator	Institute of horticulture	Tel/Fax: pintea@yahoo.com
20	Leonid Volosciuc	Researcher	Inst.of Genetics	Tel: 22-21-78
21	Dr. Adrei Munteanu	Head lab.	Institute of Zoology, Academy of Sciences of the Republic of Moldova	Tel: 73 97 86 Fax: 73 12 55
22	Dr H. Mina Lozanu	Researcher	Institute of Ecology and Geography, Academy of Sciences of the Republic of Moldova	Tel: 73 15 50 Fax: 73 98 38
23	Dmitri Drumea	Researcher	Institute of Ecology and Geography, Academy of Sciences of the Republic of Moldova	Tel/Fax: 73 92 48
24	Alexandru Galupa	Researcher	Institute for Forest Research and Development	aleхгалupa@yahoo.com Fax: 59 33 51 Tel: 0 682 099 19
25	Dr. Aurel Lozan	Manager	FLEX WB Project, Forestry Agency "Moldsilva"	Tel/Fax: 27 72 88
26	Manic Gh.	Director	Scientific Reservation "Codrii"	Tel : 237 47 206 237 47 386
27	Ion Talmaci	Director	Scientific Reservation "Plaiul Fagului"	Tel: 236 93 5 35; 93571; 93581; 93532
28	Victor Tarigradschi	Director	Scientific Reservation "Padurea Domneasca"	Tel: 249 249 98 Fax: 249 249 98
29	Ion Girnet	Director	Scientific Reservation "Prutul de Jos "	Tel: 293 61339 299 60159
30	Ana Birsan	Head department	State University of Moldova	577527
31	Dr.Mihai Lesanu	Dean	State University of Moldova	577521
32	Dr. Alexei Andreev	Director	Ecological Society BIOTICA	Tel./Fax: 76 15 40
33	Marcela Vatamaniuc	Project manager	Integrated and Sustainable Use of the steppe lands of Eurasia	Tel: 22 05 45 0 692 72 192
34	Ion Cotofana	consultant	Biodiversity Office	24 22 20