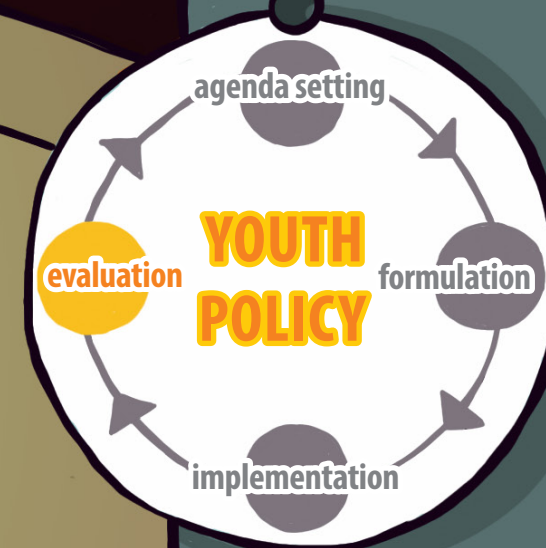


# YOUTH POLICY EVALUATION

Evaluation is a process that seeks to describe a value of a policy measure, using data and research methods. Evaluation is introduced to understand the impact, quality and management of youth policies.

Youth policy comprises a range of policies that seek to support young people in transition to becoming autonomous individuals and

active members of society. All countries have a youth policy – by design, default or neglect. Public policy intervention is a cyclic process.



## CHECKLIST

### HOW?

- 1 Define the goal, objectives and indicators of the policy.
- 2 Define the indicators system for monitoring and evaluation.
- 3 Consult with stakeholders, including young people, on the evaluation plan.

## Planning

### CARRIAGE 1

- 4 Design the monitoring system and quality check the indicators.
- 5 Design the evaluation system and identify the data needed.
- 6 For ex-ante evaluation, assess the M&E system and the indicators.
- 7 For ex-post/impact evaluation, prepare in the planning phase the data/indicators to be collected.

- 1 Collect and update information on indicators.
- 2 Continuously improve indicators and the monitoring system.
- 3 Conduct interim evaluations to assess the M&E framework.

## Implementation

### CARRIAGE 2

- 4 Involve young people (surveys, focus groups, interviews, consultations, meetings, online...)
- 5 Compile information on indicators and the progress achieved; report on this progress.
- 6 Ensure that the monitoring system will deliver data for the impact evaluation.

- 1 Decide on the evaluation questions and methods planned.
- 2 Select independent evaluators, if planned.
- 3 Assess the measure on the basis of performance/monitoring indicators.
- 4 Involve young people.
- 5 Collect data for other indicators identified as needed and assess the policy measure.

## Evaluation

### CARRIAGE 3

- 6 Check results of the ex-ante evaluation regarding the indicator and M&E system.
- 7 Review indicators linked to a possible review of the youth policy.
- 8 Review the monitoring system and its results.
- 9 Except in the case of ex-post evaluations, continue to monitor and collect data.

## WHY monitor and evaluate youth policy?

- to provide feedback on progress and identify lessons learnt
- to inform decisions and improve policy effectiveness
- to demonstrate impact and promote the results
- to promote accountability of all stakeholders involved
- to engage stakeholders and build ownership

### WHO?



### Youth Partnership

Partnership between the European Commission and the Council of Europe in the field of Youth



EUROPEAN UNION



CONSEIL DE L'EUROPE

Disclaimer: The opinions expressed in this work, commissioned by the European Union–Council of Europe youth partnership, are the responsibility of the authors and do not necessarily reflect the official policy of either of the partner institutions, their member states or the organisations co-operating with them. Infographic by Mireille van Bremen