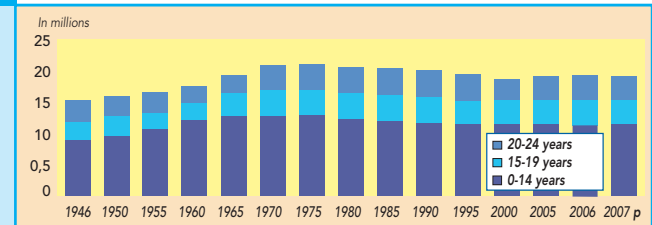


POPULATION

1 CHANGES IN THE NUMBER OF YOUNG PEOPLE UNDER 25 SINCE 1946



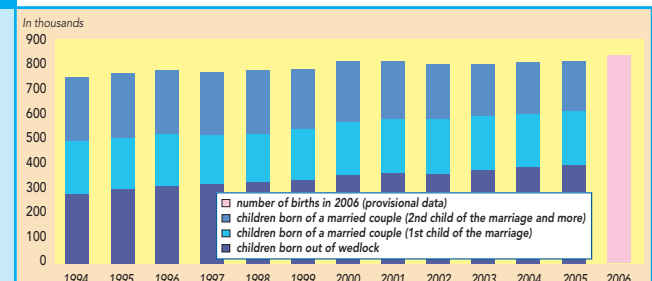
p: Provisional data.
Scope: Metropolitan France.
Source: INSEE, demographic report.

2 DISTRIBUTION BY FIVE-YEAR AGE GROUPS OF YOUNG PEOPLE UNDER 25 YEARS, PERCENTAGE OF THE TOTAL POPULATION

	Men	Women	Total
Population aged 0-4	2 050 505	1 960 742	4 011 247
Population aged 5-9	2 015 564	1 923 316	3 938 880
Population aged 10-14	1 952 013	1 860 932	3 813 245
Population aged 15-19	2 077 724	1 995 013	4 072 737
Population aged 20-24	2 046 498	2 012 338	4 058 836
Young people under 25	10 142 604	9 752 341	19 894 945
Percentage of young people under 25 in the total population	16.0 %	15.4 %	31.4 %

Scope: France as a whole (Metropolitan France + Overseas départements).
Source: INSEE, public records, population as of 1st January 2007.

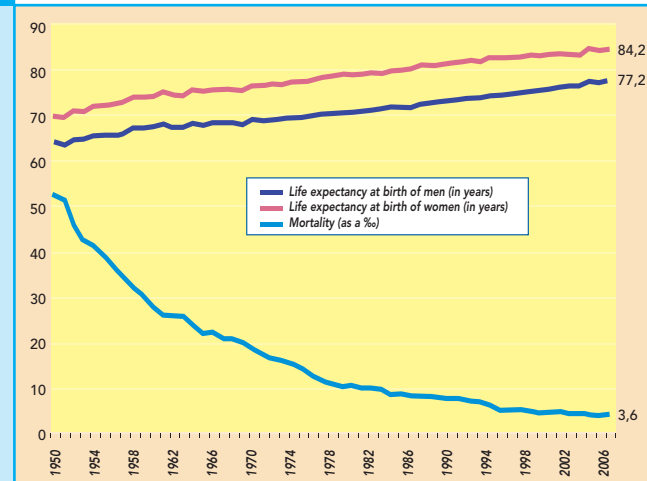
3 NUMBER OF BIRTHS PER ORDER SINCE 1994



Scope: France as a whole (Metropolitan France + Overseas départements).
Note: For legitimate children, this is the order in the current marriage.
Source: INSEE, public records.

POPULATION

4 LIFE EXPECTANCY AT BIRTH AND INFANT MORTALITY RATE



Note: The infant mortality rate is the number of children who die before one year of age in relation to all children born alive.
Scope: Metropolitan France.
Source: INSEE, demographic report.

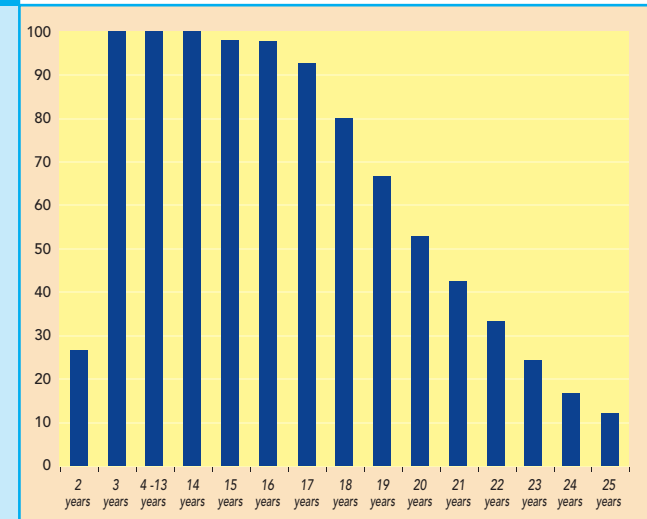
5 LIVING ARRANGEMENTS OF 15-29-YEAR-OLDS BY GENDER

Living arrangements	in 2005, en %			
	15-19 years	20-24 years	25-29 years	Total
Men	100.0	100.0	100.0	100.0
Living with parents	92.1	64.9	28.4	62.3
Not living with parents or in a couple	7.3	20.7	21.0	16.3
Living in an unmarried couple	0.5	12.9	33.3	15.3
Living in a married couple	0.0	1.5	17.3	6.1
Women	100.0	100.0	100.0	100.0
Living with parents	90.8	50.4	14.0	51.8
Not living with parents or in a couple	7.4	22.0	18.4	16.0
Living in an unmarried couple	1.6	22.0	38.0	20.5
Living in a married couple	0.2	5.6	29.6	11.7
Total	100.0	100.0	100.0	100.0
Living with parents	91.5	57.8	21.2	57.1
Not living with parents or in a couple	7.4	21.3	19.7	16.1
Living in an unmarried couple	1.1	17.4	35.6	17.9
Living in a married couple	0.1	3.5	23.4	8.9

Scope: Metropolitan France, people aged between 15 and 29.
Note: results as an annual average.
Source: INSEE - 2005 Employment Survey.

SCHOOL, EDUCATION

6 SCHOOLING RATE BY AGE IN 2004-2005 (AS A PERCENTAGE)



Scope: Metropolitan France, state and private schools.
Source: French Ministry for Education, DEPP (Directorate for assessment, forward planning and performance).

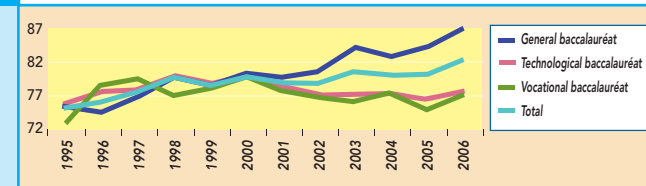
7 EDUCATION AND TRAINING AFTER THE AGE OF 14/15 (1)

Course	Girls		Boys		Proportion of girls (as a %)
	Number	%	Number	%	
Last year of junior secondary school (1)	24 463	6.6	25 010	7.1	49.4
First year of senior secondary school (general & technological schools)	246 743	66.7	201 821	57.3	55.0
BEP (technical school certificate) in production	79 871	21.6	103 376	29.3	43.6
BEP (technical school certificate) in services	7 896	2.1	71 141	20.2	10.0
CAP (vocational training certificate) (2) in production	17 831	4.8	20 500	5.8	46.5
CAP (vocational training certificate) (2) in services	5 707	1.5	16 233	4.6	26.0
Other courses	12 124	3.3	4 267	1.2	74.0
Total	750	0.2	1 682	0.5	30.8
Total	369 658	100.0	352 389	100.0	51.2

(1) Last year of junior secondary school (all categories: general, technological, integration and special education) and all types of schools.
(2) including special education.
Scope: Metropolitan France and overseas départements - State and contract-based private schooling, French Ministry for Education.
Source: French Ministry for Education, Higher Education and Research, DEPP (Directorate for assessment, forward planning and performance).

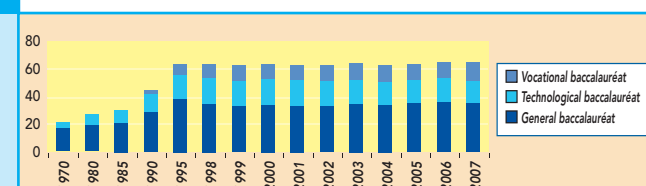
SCHOOL, EDUCATION

8 BACCALAURÉAT PASS RATE SINCE 1995 (AS A PERCENTAGE)



Champ : France entière.
Source : Ministère de l'Éducation Nationale, DEPP.

9 PROPORTION OF PEOPLE PASSING THE BACCALAURÉAT PER GENERATION AND PER TYPE OF BACCALAURÉAT (AS A %)



Note: 1995 and previous years: former specialisations, with in 1990 and 1995 population data based on the 1990 census, 1998 and subsequent years: new specialisations, with population data based on the 1999 census, 2007: provisional data.
Scope: Metropolitan France.
Source: French Ministry for Education, DEPP (Directorate for assessment, forward planning and performance).

10 ASSESSMENTS OF THE READING ABILITY OF 17 YEAR-OLDS DURING THE NATIONAL DEFENCE DAY

Profile	Complex processes	Fluent reading	Lexical knowledge	Boys (%)	Girls (%)	Total (%)	
5d	+	+	+	59.4	69.3	64.3	Fluent readers
5c	+	-	+	16.6	12.2	14.4	78,7 %
5b	+	+	-	6.2	7.7	7.0	Average readers
5a	+	-	-	3.0	2.3	2.6	9,6 %
4	-	+	+	4.6	3.0	3.8	Very poor readers
3	-	-	+	4.3	1.9	3.1	6,9 %
2	-	+	-	2.5	1.9	2.2	Severe difficulties
1	-	-	-	3.4	1.7	2.6	4,8 %

Reading: combination of the three dimensions of the assessment used to define eight profiles. The profiles numbered 1 to 4 concern young people who are unable to carry out complex processes (very poor understanding of an entire text, very little ability to find information), they are below the level of basic reading. The profiles numbered 5a, 5b, 5c, 5d are above this level, but with varying levels of skills, which can require relatively considerable efforts to understand the text.
Survey conducted in 2006 involving 800,000 young men and women aged 17 or over with French nationality.
Source: Ministry of Defence- DSN, Ministry for Education-DEPP.

SCHOOL, EDUCATION

11 STUDENTS LEAVING INITIAL TRAINING ACCORDING TO THEIR HIGHEST QUALIFICATION

	in 2004	
	in thousands	in %
Doctorate (except in health)	4	1
Doctor of medicine diploma, etc.	5	1
1-year/ 3-year post-graduate advanced degree	11	2
Engineering degree	18	2
Master-level qualifications from other graduate schools	19	3
1-year specialised post-graduate advanced degree	28	4
"Maîtrise" (4 years of higher education)	36	5
Bachelor's degree ("Licence" - 3 years of higher education)	43	6
DEUG (2 years of higher education)	11	1
2-year technical certificate (BTS) or equivalent	78	11
2-year technical college diploma (DUT), scientific diploma (DEUST)	17	2,5
Paramedical and social diplomas (nursing, etc.)	24	3,5
Baccalauréat or equivalent	168	24
CAP, BEP vocational or technical certificate or equivalent	121	17
School-leavers certificate (taken at 16 years of age)	48	7
No qualifications	69	10
Total of students leaving initial training	700	100

Note: the percentages are more representative than the numbers of students underestimated in 2004.
Scope: Metropolitan France.
Source: DEPP calculations based on INSEE Employment surveys (as an annual average).

12 THE VARIOUS TYPES OF SCHOOLING FOR DISABLED YOUNG PEOPLE IN 2005-2006 FOR PRIMARY AND SECONDARY EDUCATION

Level of education	Schools		Medical and educational institutions (EME) and hospitals***		Total
	Individual schooling	Collective schooling**	Medical and educational institutions	Hospitals	
Primary	65	39.8	50.8	4.2	159.9
Nursery	17.6	2.2	14.1	1.6	35.5
Primary	47.4	37.6	36.7	2.6	124.3
Secondary	39*	7.8	7.1	1.3	55.1
Undifferentiated	-	-	12.2	0.7	12.9
Total	104	47.6	70.1	6.2	227.8

Figures rounded to the nearest hundred.
Sources: DEPP, surveys Nos. 3, 12 and 32.
Scope: Metropolitan France and overseas départements, state and private schools
* including 6300 pupils attending special general and vocational courses (SEGPA) and 1500 in regional special schools (EREA) offering training and classes for pupils with difficulties at school and social schools.
**including CLUS and UPI classes for disabled pupils
***pupils attending classes all year long.
Note: 20,000 disabled children and teenagers do not attend school.

HEALTH

13 NUMBER OF BEDS IN MEDICAL INSTITUTIONS ALLOCATED TO DISABLED CHILDREN AND YOUNG PEOPLE

Institutions for young people with:	2002	2003	2004	2005	2006
Mental disabilities	71 944	66 432	66 274	66 051	62 791
Multiple disabilities	10 935	7 031	7 181	7 098	7 122
Physical problems	15 278	15 540	15 706	15 167	16 816
Behavioural disabilities	7 088	6 905	6 938	6 801	7 013
Sensory disabilities	9 872	9 130	9 098	9 028	8 341
Beds in SESSAD*	20 219	23 142	24 471	26 255	29 235

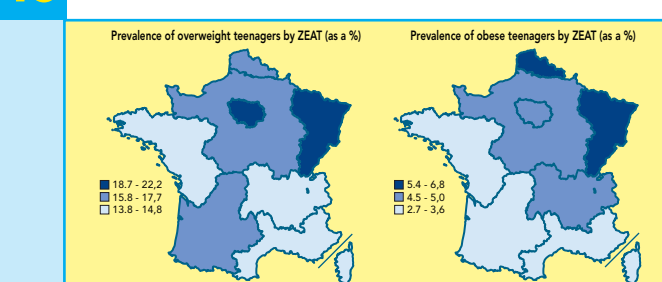
(*) SESSAD: Special education and home care service.
Source: DRASS - ES Survey - FINES.

14 HEALTH OF CHILDREN IN LAST YEAR OF NURSERY SCHOOL AND OF PRIMARY SCHOOL

	pupils in last year of nursery school* (as a %)	Pupils in last year of primary school**	
		% of pupils in a ZEP***	not in a ZEP***
at least two dental caries	15	37.1	49.8
at least two untreated dental caries	9.5	8.1	15.2
wearing glasses	12.3	25.9	22.8
not vaccinated against measles	5.7	4.8	2.9
respiratory problems	11.9	nr	nr
has had asthma	nr	14.3	12
asthma currently treated	nr	9.5	8
overweight	14.4	19.9	24.4
obese	3.9	4.1	7

ns: not specified.
*pupils in the last year of nursery school in 1999-2000: children aged between 5 and 6.
**pupils in the last year of primary school in 2001-2002.
***ZEP: area targeted for special help in education
Scope: Metropolitan France + overseas départements
Source: three-yearly health survey, DREES, DGESCO.

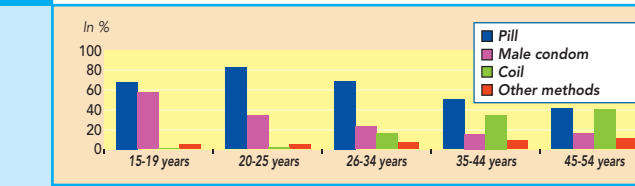
15 PREVALENCE OF OVERWEIGHT AND OBESE TEENAGERS IN THE LAST YEAR OF JUNIOR SECONDARY SCHOOL BY ZEAT*



Source: Three-year cycle of surveys on teenagers in the last year of junior secondary school, academic year 2003-2004.
Indications: In 2003/2004, over 18.7% of pupils in the last year of junior secondary school were overweight in the Ile-de-France region.
In the Nord-Pas de Calais region, over 5.4% of pupils in this year in 2003/2004 were obese.
* ZEAT: Study and regional development zone.

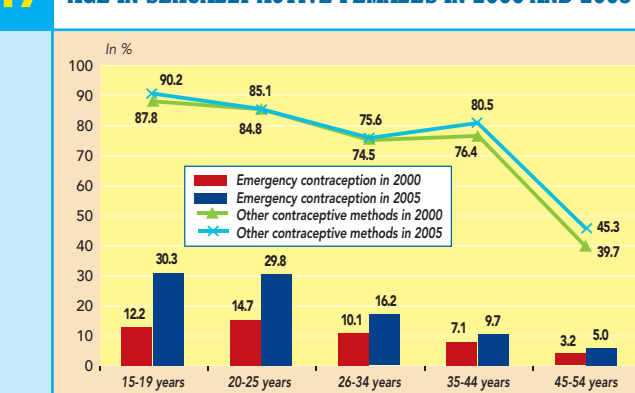
HEALTH

16 MAIN CONTRACEPTIVE METHODS USED BY AGE



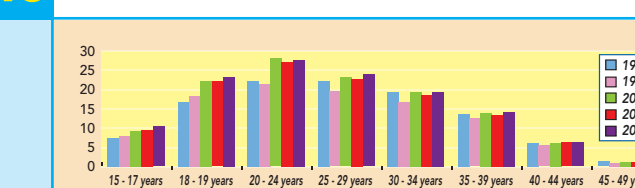
The total may exceed 100% as several answers are possible.
Survey involving a representative sample of 30,514 people.
Source: 2005 Health report, INPES.

17 EMERGENCY AND OTHER CONTRACEPTIVE METHODS BY AGE IN SEXUALLY-ACTIVE FEMALES IN 2000 AND 2005



Survey involving a representative sample of 30,514 people.
Source: 2005 Health report, INPES.

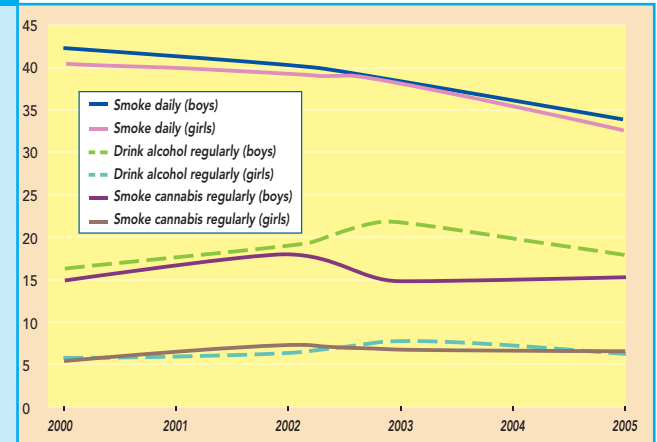
18 CHANGES IN THE NUMBER OF ABORTIONS PER 1000 WOMEN BY AGE



Scope: Metropolitan France.
Sources: SAE, PMSI-MCO (DHOS-DRESS); INSEE.

HEALTH

19 CHANGES OVER 2000-2005 OF THE LEVEL OF REGULAR USE OF CIGARETTES, ALCOHOL AND CANNABIS BY 17 YEAR-OLDS, BY SEX (AS A PERCENTAGE)



Note: regular use is defined over the 30 days prior to the survey, as follows: for cigarettes, daily smoking, for alcohol and cannabis, having smoked cannabis or drunk alcohol at least ten times over the period.
Source: ESCAPAD 2000-2005, OFDT.
Scope: Metropolitan France only.

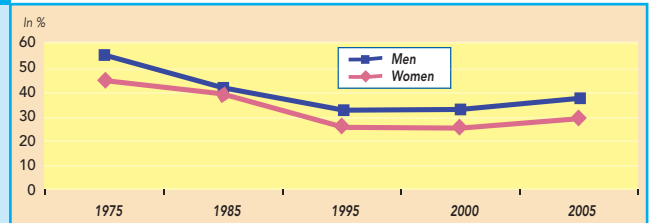
20 CAUSES OF DEATH BY AGE GROUP IN 2005

	death at less than 1 year of age	death between 1 and 4 years	death between 5 and 14 years	death between 15 and 24 years	Total population
Violent deaths including: traffic accidents suicides	71 0	180 0	263 29	2 444 1 416	37 805 5 377
Certain infections over the perinatal period	1 355	5	2	2	1 364
Genetic malformations and chromosomal anomalies	579	59	36	72	1 480
Tumours	20	92	208	365	155 407
Diseases of the nervous system and sensory organs	118	43	57	170	26 371
Diseases of the blood stream	51	25	36	136	149 839
Infections and parasites	60	32	24	37	9 903
Other causes	515	166	150	593	145 347
All causes	2 769	602	776	3 819	527 516

Scope: Metropolitan France.
Source: Inserm, CépiDc - Epidemiology centre for the medical causes of deaths.

EMPLOYMENT AND JOBS

21 ACTIVITY RATE OF 15 - 24 YEAR-OLDS BY SEX



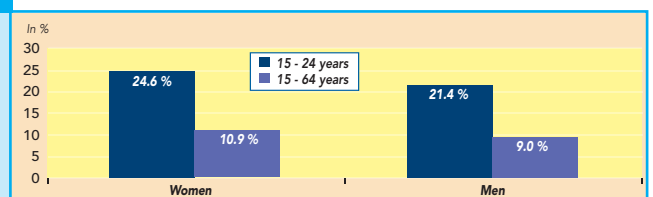
Note: activity rate in March of each year, except census years (April in 1975 and 1982; January in 1990 and 1999), up to 2001, average annual activity rate from 2002.
Source: INSEE, Employment surveys.

22 THE WORKING POPULATION BY AGE AND AND JOB STATUS

	working population aged between 15 and 29	Total working population
Not employees	3.1	10.9
Employees	96.9	89.1
Temporary employees	5.5	2.2
Apprentices	6.9	1.3
Fixed-term contracts	16.1	6.9
Public sector	4.7	2.1
Private sector	11.4	4.8
Internships and job incentive contracts (1)	4.8	1.8
Public sector	1.2	0.6
Private sector	3.6	1.2
Open-ended contract and other contracts	63.6	76.9
Total	100	100
Total jobs (in thousands)	4 854	24 921

(1) Job incentive contracts (work experience schemes, job support schemes, contracts for the integration of welfare recipients, youth employment schemes, etc.) and vocational training placements in the employment category in compliance with ILO criteria.
Scope: working population of 15 years of age and over.
Source: INSEE, 2005 employment survey.

23 UNEMPLOYMENT RATE BY SEX AND AGE IN 2005



Source: INSEE, Employment surveys.
Note: unemployment rate according to ILO criteria in March of each year (except census years: January in 1990 and 1999) up to 2001. Annual average unemployment rate as from 2002. Scope: population of working age (15-64 years).
The unemployment rate is the percentage of unemployed people in the population of working age (those who work + the unemployed).

EMPLOYMENT AND JOBS

24 YOUNG PEOPLE UNDER 26 IN JOB INCENTIVE SCHEMES

Data at 31 December 2006, in thousands

Block-release courses	557
Apprenticeships	403
Qualification, orientation and adaptation schemes	4
Work experience schemes	151
Market-sector employment excluding block-release courses	138
Job initiative contracts	18
Job support for young people in companies	120
Non-market-sector employment	65
Public-sector solidarity schemes	0
Youth employment schemes	6
Job contracts with incentives for employers	1
Job support schemes	55
Contracts for the integration of welfare recipients	4
Total	761
Percentage of job incentive schemes in total jobs for young people	26.2*
Percentage of job incentive schemes (for all ages) in total jobs	4.6*

*2005 data.
Scope: Metropolitan France, young people under 26 in an employment policy measure, excluding reductions for part-time work, schemes for unemployed people creating a business, and integration through employment.
Sources: Ministry for Labour, Labour Relations and Solidarity, Research and Statistics Division (employment statistics), INSEE, Employment Surveys.

25 PERCENTAGE OF PEOPLE LIVING UNDER THE POVERTY THRESHOLD BY AGE

Percentage	Women		Men	
	60% threshold	50% threshold	60% threshold	50% threshold
Under 18 years of age	15.8	8.3	15.2	7.7
18-24 years	10.4	5.6	9.0	5.3
25-34 years	10.4	5.6	9.0	5.3
Total population	12.6	6.6	11.5	6.0

Scope: Individuals in households with positive or nil declared income and in which the reference person is not a student.
Source: INSEE-DGI, 2005 tax income survey.

2005 poverty threshold, in euros per months

60% threshold	817
50% threshold	681

Scope: Individuals in households with positive or nil declared income and in which the reference person is not a student. Source: 2004 tax income survey, Insee-DGI. The poverty threshold is calculated according to the distribution of living standards for the population as a whole. Eurostat and European countries generally use a threshold at a 60% median of living standards. France also uses this threshold, but also widely uses a 50% threshold, which was the reference threshold until recently.

JUSTICE

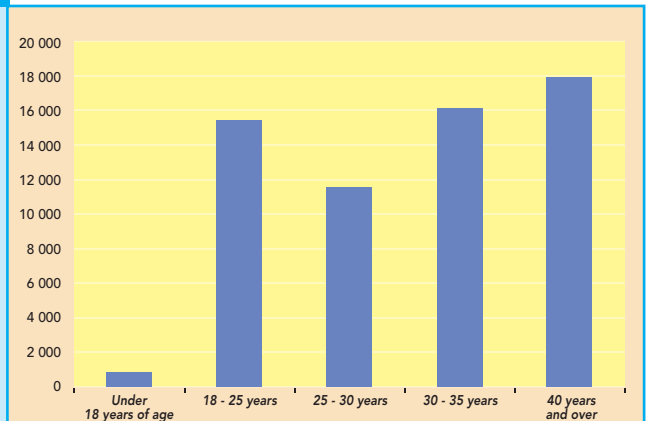
26 PROPORTION OF MINORS AMONG OFFENDERS AND JUVENILE DELINQUENCY BY TYPE OF OFFENCE IN 2007

as a %

Theft (including possession of stolen goods)	32.0
Breaking and entering	32.9
Theft of two-wheel motor vehicles	56.8
Theft of objects or accessories in registered vehicles	34.3
Shoplifting	33.0
Other violent thefts without firearms	44.6
Crimes and offences on people	16.2
Assault and battery	18.0
Threats or blackmail	15.4
Rape	23.3
Other offences (including drugs)	14.0
Breach of the legislation on drugs	11.4
Vandalism and damage to goods	36.4
Arson	51.6
Possession of prohibited weapons	16.5
Total	18.0

Scope: Metropolitan France.
Source: Ministry of the Interior, Overseas France and Local authorities.

27 PRISON POPULATION AT 01-07-2006 BY AGE



Note: The selected age groups are not of the same size, therefore contrary to what the graph appears to show, the proportion of incarcerated people is higher among 25-30 year-olds than 30-40 year-olds.
Source: French Prison Service, Quarterly statistics on prisoners. 2006 key justice figures.

JUSTICE

28 YOUNG PEOPLE UNDER CONTROL OF JUVENILE PROTECTION SERVICE INSTITUTIONS

	Public Sector		Authorised associations	
	2004	2005	2004	2005
Number of young people under court control at 31 December (excluding investigations)	42 062	43 508	121 229	122 971
Number of new cases over the year (excluding investigations)	54 038	56 093	78 135	80 347
Age and sex of young people under court control (new cases over the year)* (excluding investigations)				
Under 10 years	1 188	1 100	24 313	24 993
10-12 years	1 183	1 236	10 255	10 540
13-15 years	8 769	9 203	19 073	19 643
16-17 years	17 388	18 648	19 293	19 802
18 years and over	10 546	10 546	4 714	4 871

* Associations only deal with correction, the public sector deals with all categories of educational measures in criminal probation centres.
In 2004, the improvement of calculation and data accuracy tools has brought about the removal of duplicates of young people dealt with by the public sector as part of educational measures.
Youth measures are still counted for associations.
Source: Juvenile Protection Service.

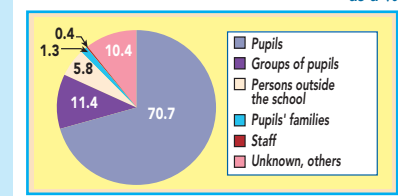
29 SERIOUS ACTS OF VIOLENCE IN STATE SECONDARY SCHOOLS IN 2005-2006

Number of incidents per type of school (September 2005 - June 2006)

	Number of incidents recorded in the year	Average number of incidents per school	Average number of incidents per 100 pupils
General and technological senior secondary schools	10 800	10.0	1.0
Vocational senior secondary schools	11 058	14.3	3.3
Junior secondary schools	59 074	14.9	3.1
Regional special schools	1 132	19.5	14.7
Total	82 064	14.0	2.5

For the 2005-2006 academic year, junior secondary schools recorded an overall number of 59,074 incidents, which represent 14.9 incidents per school or 3.1 incidents per 100 pupils in this type of school.

Perpetrators of violent acts



Sources: SIGNA Survey No. 76 on violence in schools, Statistical references on teaching, training and research - 2008 edition.

LEISURE - YOUNG PEOPLE

30 SPORTING ACTIVITY BY AGE - PROPORTION OF CLUB MEMBERS AND COMPETITORS

in %

	Percentage taking part in sporting activities	Club members	Competitors
15-24 years	90	46	19
25-34 years	84	37	10
35-44 years	83	35	9
45-54 years	72	28	6
55-64 years	67	31	7
65 years and over	37	20	3
Total	71	34	10

Scope: people aged 15 and over.
Source: INSEE, Survey of people taking part in cultural and sporting activities, 2003.

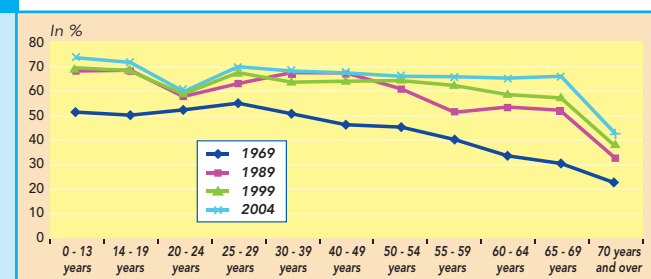
31 ADULT CULTURAL ACTIVITIES BY AGE, SEX AND TYPE

in %

At least once over the last 12 months...	Reading	Cinema	Museums or exhibitions	Theatre	Concerts, shows	Listening to the radio	Listening to CD, records, cassettes
Total Age	58	47	39	16	31	87	75
15-29 years	66	78	41	17	41	88	96
30-39 years	58	54	41	14	34	93	92
40-49 years	57	51	43	16	31	91	82
50-59 years	56	38	41	21	30	89	70
60-69 years	56	30	43	17	26	85	58
70-79 years	51	17	31	12	18	75	39
80 years and over	49	9	17	4	7	64	31
Sex							
Female	67	48	41	18	31	85	76
Male	48	46	38	14	30	88	74

Scope: people aged 15 and over.
Source: INSEE, permanent survey of living conditions (EPCV), 2005.

32 PERCENTAGE OF PEOPLE WHO GO ON HOLIDAY BY AGE



Source: INSEE, permanent survey of living conditions (EPCV).

KEY YOUTH FIGURES



Photo: Hervé HAMON / French Ministry for Health, Youth and Sport