

Seminar on supporting young people's critical thinking in a digital age

Infopack

TIMISOARA YOUTH HOUSE
21-23 APRIL 2026



Youth Partnership

Partnership between the European Commission and the Council of Europe in the field of Youth



PRACTICAL INFORMATION

Venue and hosting organisation

Timis County Youth Foundation (FITT)

Timis County Youth Foundation (FITT) is a youth-led umbrella organisation for youth NGOs in the western part of Romania. With 29 youth NGOs members and over 35 years of continuous activity, FITT is one of the oldest and most important youth NGOs in the region.

FITT is also responsible for the Youth House of Timisoara – where our seminar will take place – and which has since 2016 been part of the Council of Europe Quality Label Network for Youth Centres. Take a sneak peek into their activities and the venue on the following [video](#).

The location of the youth center is: Casa Tineretului, Str. Arieș 19, 300579 Timișoara, Romania.



Accommodation and meals

You need to book your own accommodation and most meals. The costs for those are covered by the daily allowance provided by Youth Partnership (please refer to the official invitation letter to understand the reimbursement break-down).

Lunch and coffee breaks will be provided in the Youth House for the duration of the seminar.

A dinner will also be provided on the 22 April, in the restaurant Veneri 15, located along the Bega River.

Please note that there is no need to submit any invoices or proofs of payment for the self-organised accommodation or meals.

Local transport

Getting to the city from the bus/train station/airport

- By bus: If you are arriving at Normandia Bus Station, you can take tram 4 or 8. The nearest tram stop is called Bătănia.
- By train: If you are arriving at Timisoara Nord Railway Station (Timisoara Nord), the best way to get towards the city centre or the Youth House is by taking bus E3 or tram 8.
- By plane: From Traian Vuia International Airport, take bus E4 to Bastion Bus Station, which is centrally located. Alternatively, you can take an Uber or Bolt directly from the airport.

Bus and tram tickets can be purchased on board by card payment (5 RON, approximately 1 EUR, for a 1-hour ticket), in cash from dedicated kiosks (marked STPT), or via the [MobilPay app](#).

Public transport does not run between 23:00 and 05:00.

Public transport stops close to the Youth House:

- Bus: Casa Tineretului, Spitalul Județean (Arieș), Strada Cluj, or Calea Martirilor
- Tram: Spitalul Județean (Liviu Rebreanu) or Strada Cluj (1 Decembrie 1918)

If you prefer, you can also use Uber, Bolt, or a taxi (some of the most popular taxi companies are Tudo Taxi, Fan Taxi, and Euro Taxi, but please note that card payment may not always be available).

Landed in an airport close to Timisoara?

With Timisoara being a small airport, it is possible that you land in the airport in Budapest or Belgrade.

Below you can find some links for arranging your trip to/from Timisoara.

Please make sure to keep and submit all receipts, tickets and proofs of payment for the travel to/from Timisoara, as without the invoices we will not be able to refund your travel!

Transfer to Timișoara from Budapest Airport:

- By train: <https://bileteinternationale.cfrcalatori.ro/en/booking/search>
- By Flixbus: <https://global.flixbus.com/>

By private/shuttle transfer: In cases where there is no bus or train we recommend taking the shuttle transfer services to/from Budapest airport. **Please note that we will not be able to reimburse the options for private car/van, only the public shuttle.**

There are a lot of companies that provide this service, however our local partners recommend the following:
<https://www.simplicity.ro/>
+40744222299 (phone or WhatsApp) / office@simplicity.ro

Transfer to Timișoara from Belgrade Airport:

The most convenient way to get to Timișoara from Belgrade Airport is by private/shuttle transfer. Our local partners recommend the same company:
<https://www.simplicity.ro/>
+40744222299 (phone or WhatsApp) / office@simplicity.ro

Weather

In the second half of April, temperatures are expected to range from 10°C to 16°C, reaching up to 20°C on sunny days. Please make sure to prepare for both warm and sunny weather, as well as cooler nights or rain.

Local currency

The local currency used for cash payments is the Romanian Leu (RON - Romanian New Leu; 1 € ~ 5.09 RON). Bank cards are accepted in almost all shops, restaurants and service providers, and ATMs can be found anywhere within walking distance.

Electricity

Romania uses type F sockets (compatible also with Type C plugs) - so standard continental Europe plugs.

Important contacts:

For any question regarding your reimbursement or documentation needed, please reach out to Dragana JOVANOVSKA at dragana.jovanovska@partnership-eu.coe.int

For important questions regarding Timisoara or the logistics aspects of the venue or event, you can reach out to:

Nadia Tismănaru

Vice President of FITT

nadia.tismanaru@fitt.ro

+40 769 359 680

Florina Cojocaru

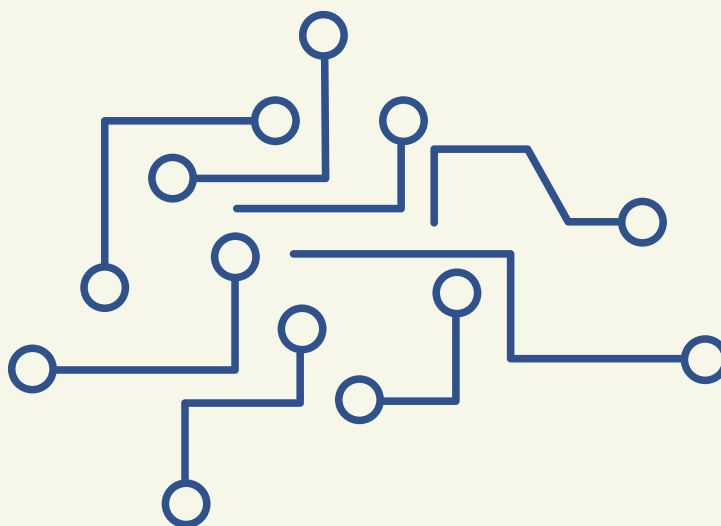
Secretary general of FITT

florina.cojocaru@fitt.ro

+40 746 703 320

**Emergency phone number for the fire department, ambulance or police:
112**

See you in Timișoara!



@eucoeyouth

Youth Partnership

Partnership between the European Commission
and the Council of Europe in the field of Youth



FITT
Timis County Youth
Foundation