

Navigating the ‘youth triangle’ within the Bonn process

*How can EYWA respond and better support youth
policy, youth research and youth work”*

Hilary Tierney,
Maynooth University
Ireland



#itscomplicated

EU Youth Strategy 2019-2027

Engage = meaningful civic, economic, social, cultural and political participation of young people.

Connect = Connections, relations & exchange of experience underpin solidarity

Empower = encouraging young people to take charge of their own lives.

Some Youth Work 'givens'

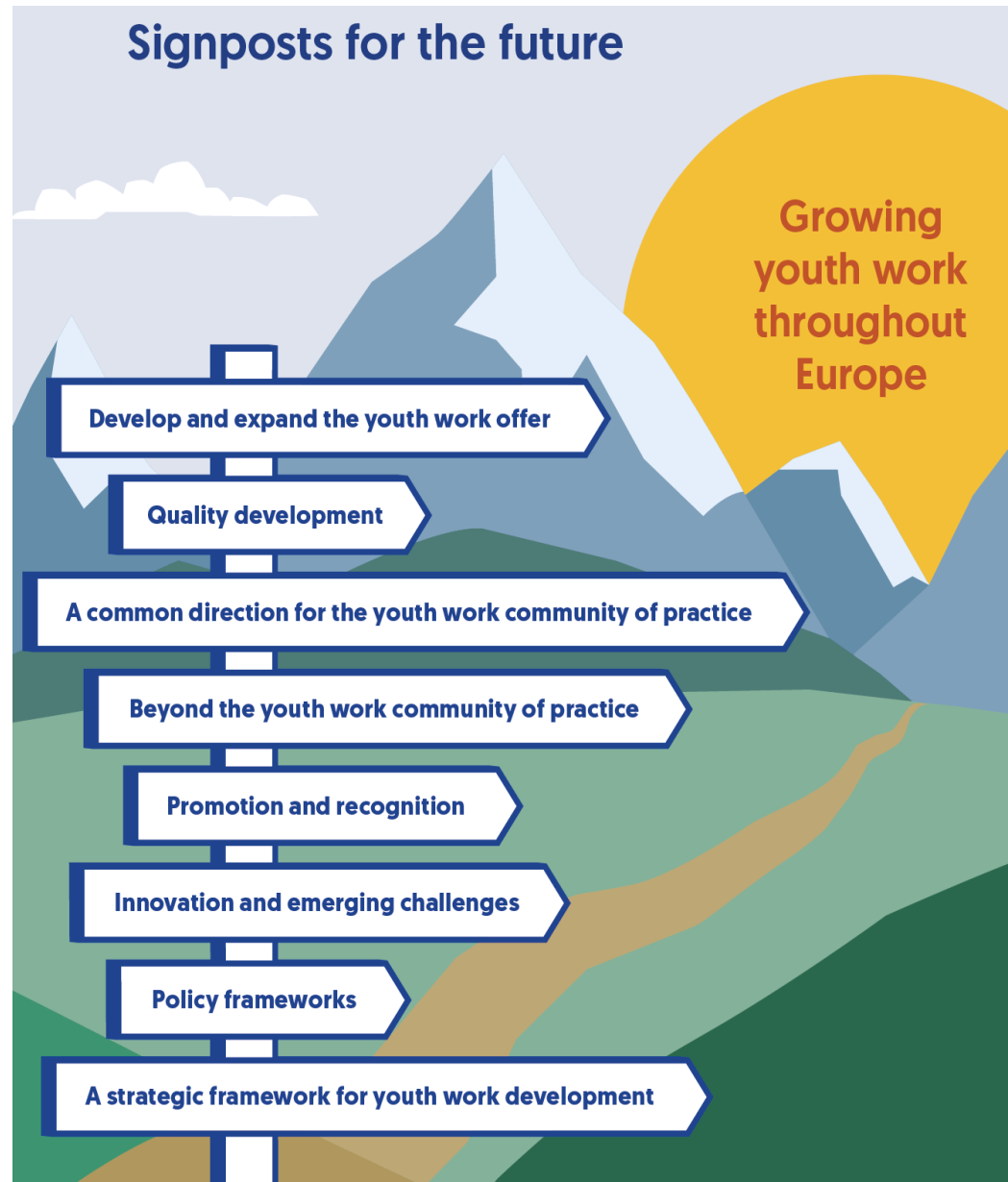
- Concerned with **personal, social and societal** development
 - **social and just Europe**
- **Starts with young people's** needs, interests, ideas and experiences – **how do 'we' know** what these are?
- **Empowering and engaging** processes – young people's active **voluntary*** participation in all aspects of that process
- **Informal and non-formal learning** (knowledge, skills, values and attitudes) □ **Dialogical & Educational**
- **Accessible, open, flexible** (CM/Rec(2017)4

The European Youth Work Agenda (EYWA)



Ambition
boost youth work.

A strategic framework
to strengthen and
further develop youth
work practice and
policies in Europe.



The Promise of Youth Work

A 'way of thinking about the 'work' of youth work, 'a way of being' with young people (and others) as well as 'a way of doing' with young people 'social, educational and relational practice ...

The 'promise' of youth work to young people:

What does honouring that that promise

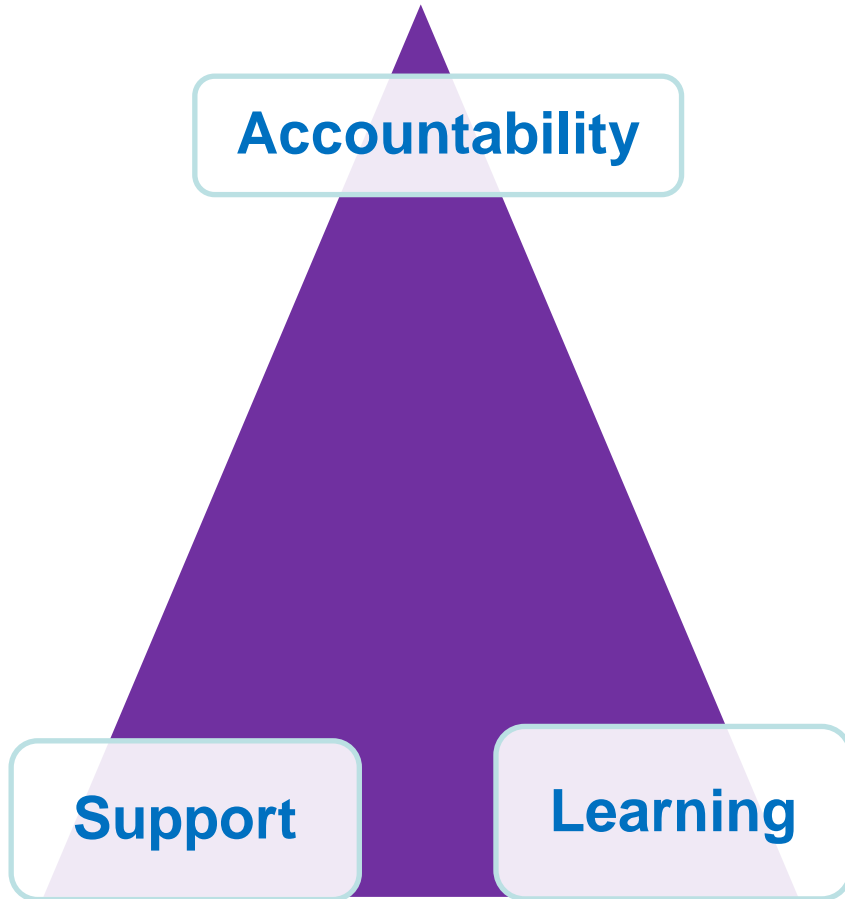
'ask' of youth workers?

'need' from youth researchers?

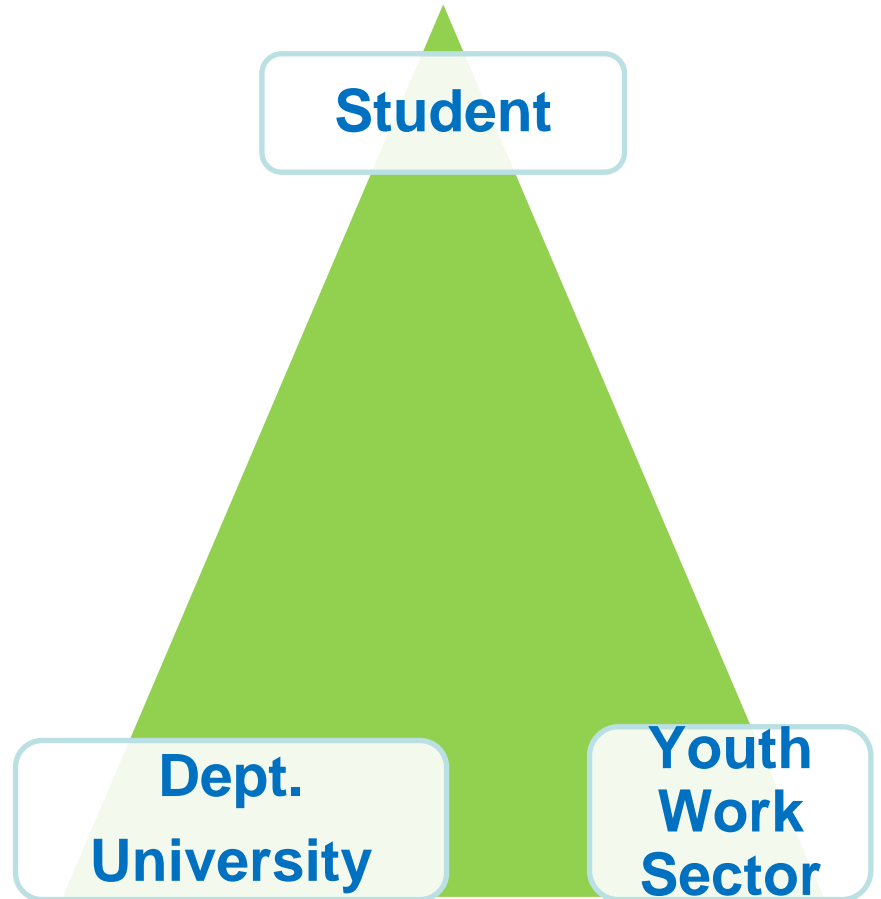
'require' of policy makers?

Three is a 'magic' number

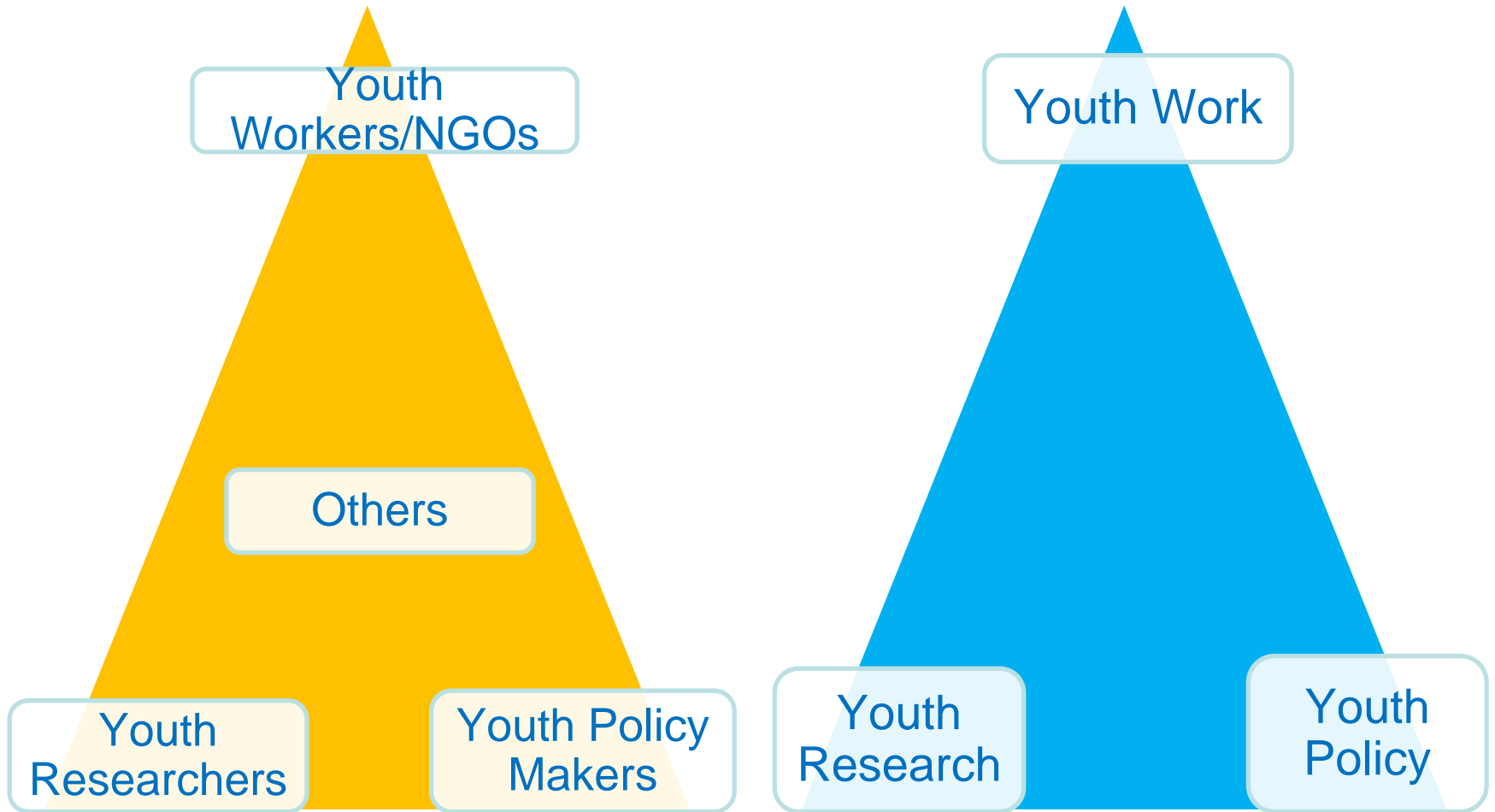
Supervision



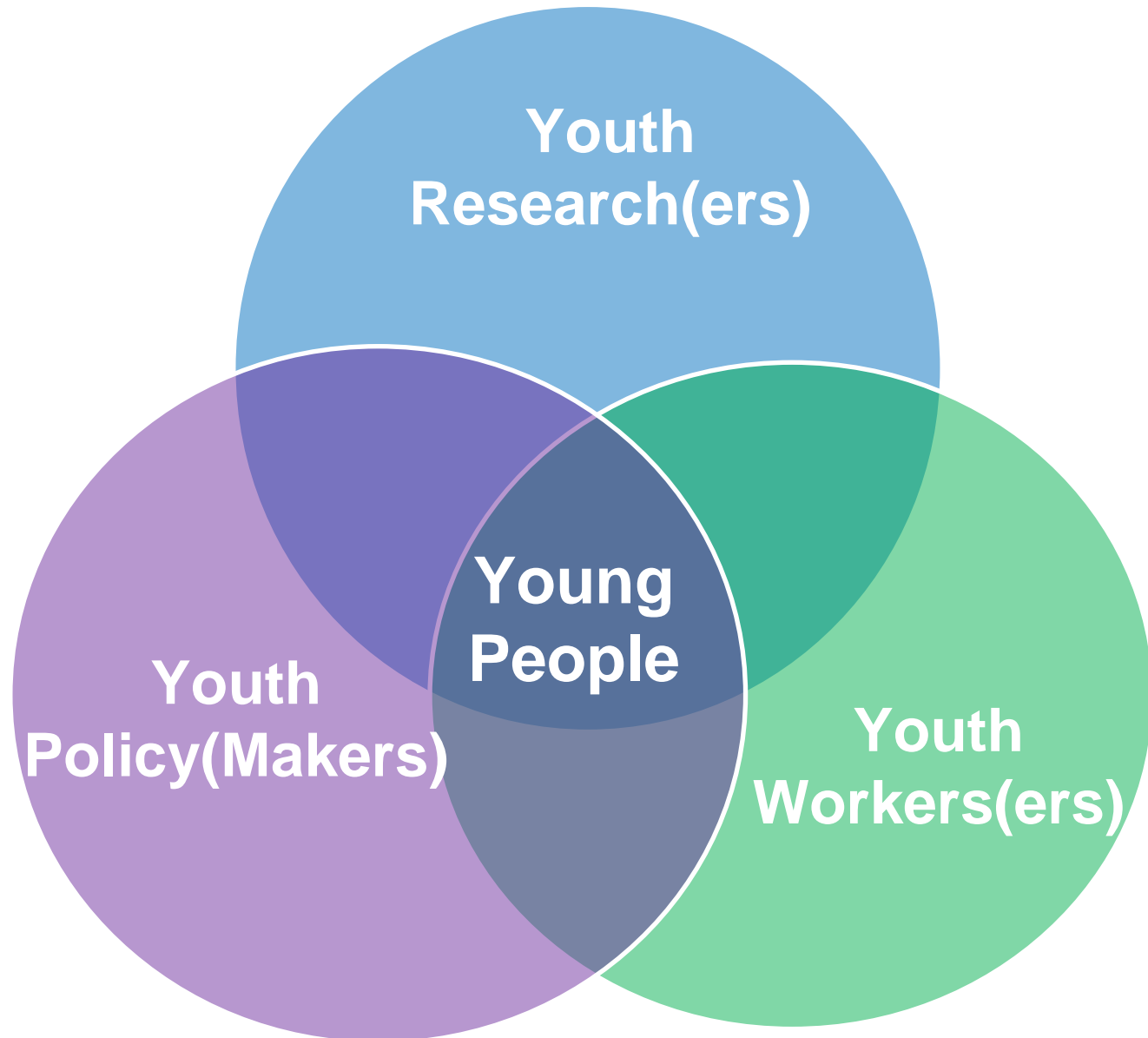
Youth Worker Education in HE



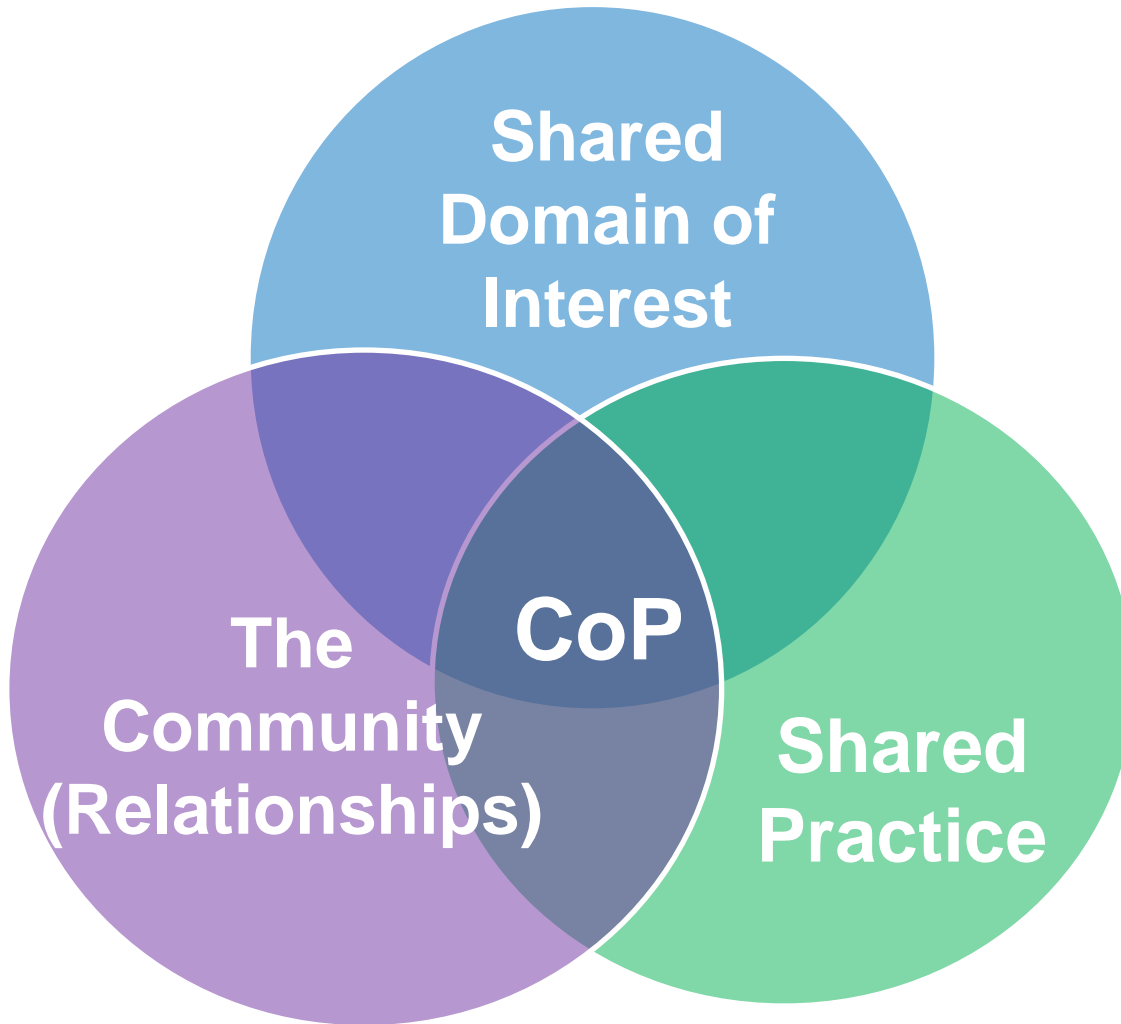
Triangles, 'magic' and otherwise



A more 'rounded' perspective



Communities of Practice (We & Us)

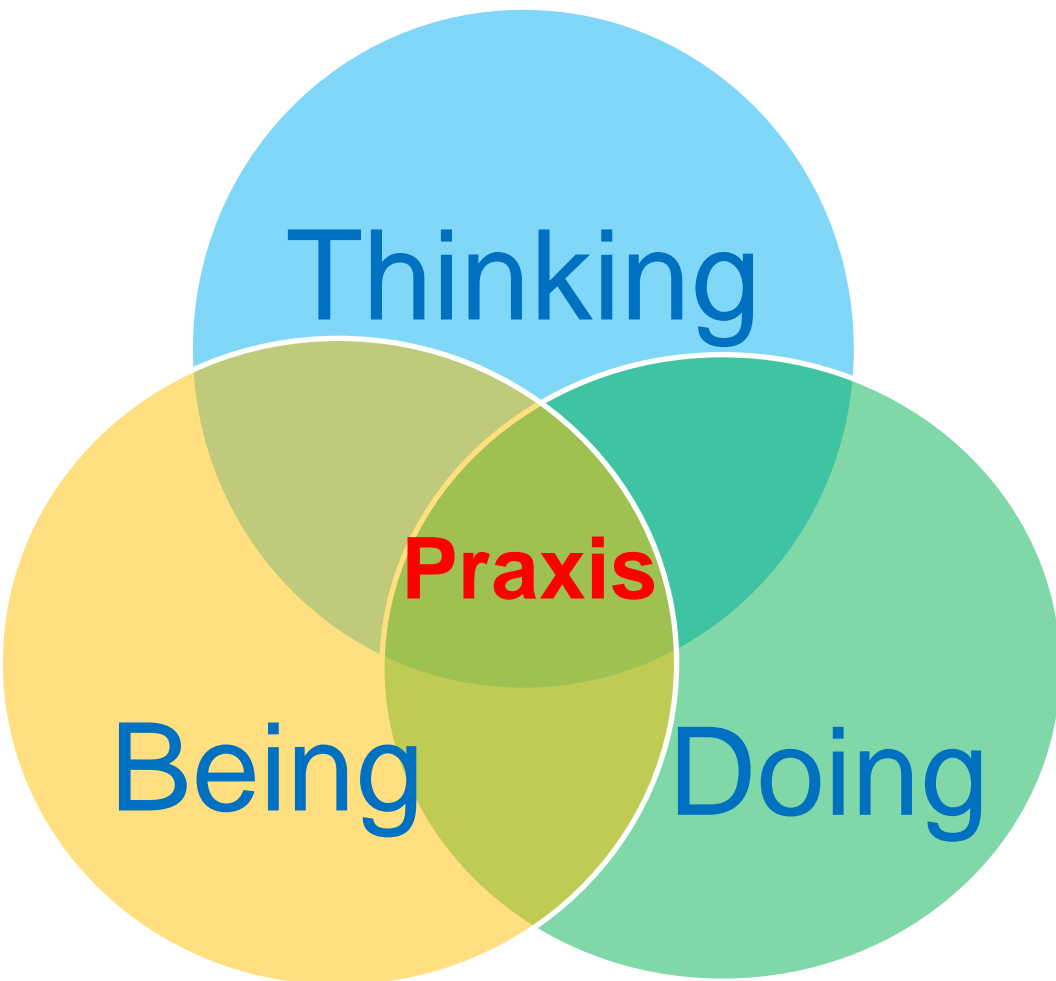


Groups of people who share a concern or a passion for something they do and learn how to do it better as they interact regularly over time

(Wenger-Trayner, 2015)

Question at the heart of practice

- what is to be done?



Praxis as *action* that is:

- Ethical
- Self-aware
- Responsive
- Accountable

Praxis = **active integration** of knowing, doing and being. (White, 2007)

Mentimeter

**Go to Menti.com
and type 5770 5014**



Towards a Community of Praxis

#keeponkeepingon

- Embrace the possibility and certainty of change
- Develop your ‘critical curiosity’ – ask why.
- Take the long view/play the ‘long game’
- Cultivate collaborative relationships within, across and beyond CoP – bring people with you
- Do what you can, where you can, when you can
- Celebrate the ‘small wins’
- Use those to ‘leverage’ the next actions
- Keep on Keeping On