



# The Adventures of Spiffy

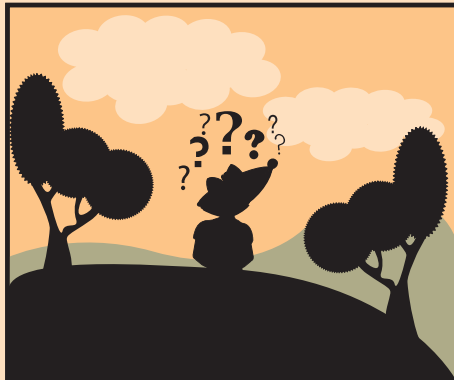
Mark Taylor The Big family

N°10  
sic

## SPIFFY moves into mind maps

Whenever we do a project session it helps participants really to know what they have to do and when

...



**BUT**

What about all those "little surprises" the unplanned things??!



Oh, God of Trainers

...



### How to organise the unplanned things?



You may notice that the number of Spiffy Adventures has gone slightly strange in recent editions. Do not worry! There are no coincidences in life.

## Make a map of your mind!

WHERE IS MY MIND?

WHEN IS THE COFFEE BREAK?

WHICH QUESTION COMES FIRST?

IS THERE A T-KIT TO HELP ME?

DO I HAVE A MIND?

IS THIS ENOUGH?

IS THERE A EUROPEAN DIMENSION HERE?

CAN I FOLD THE MAP?



**New aid for participants in European level training courses!**

Spiffy Productions will soon be releasing a CD-ROM which automatically completes application forms, ex-post ante evaluation forms, pre-courses evaluation forms and post-course impact study evaluation forms. Review copies available soon at cost price: €58.00. Active review sessions will be organised for selected purchasers.